

THE #1 RESOURCE FOR NORTHERN NEW MEXICAN FAMILIES

# Tumbleweeds

WINTER 2023 | FREE

MAGAZINE

Grandparents  
& Kin RAISING  
GRANDCHILDREN

MUSIC, LITERACY,  
& LEARNING

## Sharing Winter Joy

SCHOOL & ACADEMIC  
SUPPORT GUIDE

PG. 13

CALENDAR OF EVENTS

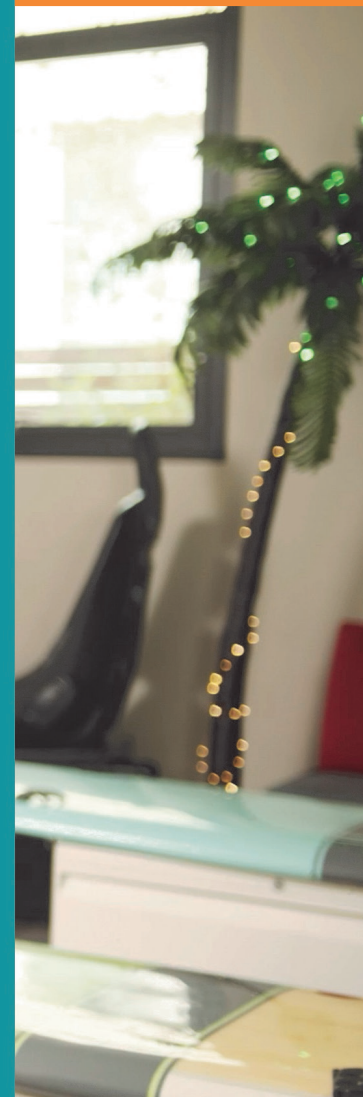
PG. 32

Holiday Traditions &  
New Year *Resolutions*





WE  
LOVE  
OUR  
JOB



## MEET ONE OF OUR DENTISTS, DR. KRIS HENDRICKS!

[santafedentistryforkids.com/doctors](https://santafedentistryforkids.com/doctors)

Visit one of our  
convenient locations:

1439 S. St. Francis Dr.  
Santa Fe, NM 87505

6640 S. Cerrillos Rd, Ste E  
Santa Fe, NM 87505

(505) 473-5437  
[santafedentistryforkids.com](https://santafedentistryforkids.com)





ASPEN SANTA FE BALLET PRESENTS

# THE NUTCRACKER

FEATURING STARS OF NEW YORK CITY BALLET

**DECEMBER 16-17**

Lensic Performing Arts Center

*Made possible through the generosity of the Hankins Foundation*

**UP NEXT:**  
**MOMIX**  
"Alice"

**FEBRUARY 6**

Made possible through the generosity of  
Lopez Love: Nance & Ramón José



Photos: Sharen Bradford

For information and tickets visit [aspensantafeballet.com](http://aspensantafeballet.com)



# Tumbleweeds

## MAGAZINE

### Cover Kid

# Q&A

#### ON THE COVER:

**XAVIER GARCIA, 5 YRS &  
LUCIA GARCIA, 3 YRS**

How do you like to spend your time?

**Xavier:** I like being with my family.

**Lucia:** With my friends at school.

What do you think will be different about the world when you are an adult?

**Xavier:** Seeing new things and me being a firefighter.

**Lucia:** I don't know.

Who are your best friends and why do you like each other?

**Xavier:** Lucas, Richard, and Jace. We like each other because we're fun.

**Lucia:** Peyton, Ms. Tammy (teacher) and Ms. Lisa (teacher). Because we're cute and nice.

What do you think your parents do at work all day?

**Xavier:** Work in meetings and do important stuff

**Lucia:** Call people and work on the computer.

What's the most important rule that you know of?

**Xavier:** No kicking.

**Lucia:** No fighting.



*The entire Garcia family were in the holiday spirit and enjoyed the sweet puppies.*

#### JOIN THE CONVERSATION

Connect with us on  
social media or write to us at

**HELLO@TUMBLEWEEDSMAG.COM.**

Letters, artwork, and articles from our readers on personal and professional experiences with children are welcome.

Tumbleweeds Magazine strives to connect families to resources and to each other.

#### CONNECT WITH US



@TUMBLEWEEDSMAG



FACEBOOK.COM/  
TUMBLEWEEDSMAG

#### THE TEAM

##### PUBLISHER

Schroer Media

##### EDITOR

Jen Paul Schroer

##### ASSISTANT EDITOR

Aleta Burchyski

##### SPANISH EDITOR

Flor de Maria Oliva

##### CONTRIBUTORS

Annabelle Black Delfin, Brenda Fleming, Anna Marie Garcia, Stephen Hamway, Severo Martinez, Brian Nelson, E. Quinones

##### COVER PHOTOGRAPHER

Kitty Leaken

##### GRAPHIC DESIGNER

Sarah Miles

##### PRODUCTION COORDINATOR

Jennifer Szpak

##### MARKETING COORDINATOR

Tara Melton

##### ADVERTISING REPRESENTATIVE

Diane Velasco-Jimenez & Rhonda Deaton

#### THE PUBLICATION

##### DISTRIBUTION

Tumbleweeds Magazine is a quarterly print and online publication. It is Northern New Mexico families' best resource. Thanks to our advertisers and community partners, seasonal issues are distributed FREE throughout Santa Fe, Española and Los Alamos.

##### DISCOUNT BULK ORDERS

If you or your organization would like to purchase copies of Tumbleweeds Magazine, bulk orders of 10 copies or more may be requested via email at: **Hello@TumbleweedsMag.com**

##### CALENDAR OF EVENTS

Tumbleweeds Magazine offers event organizers FREE online event listings and promotion. Submit your event online at: **TumbleweedsMag.com/things-to-do**

##### FAMILY DIRECTORY

As the #1 resource for Northern New Mexico families, you may include your business in Tumbleweeds Magazine's online Family Directory for FREE. Submit your business information at: **FamilyDirectory@TumbleweedsMag.com**

# Tumbleweeds

## MAGAZINE

**TUMBLEWEEDS MAGAZINE**  
P.O. Box 29162 Santa Fe, NM 87592  
(505) 500-4676  
Hello@TumbleweedsMag.com

© 2023 Tumbleweeds Magazine, All rights reserved. Please write to the publisher for permission to reproduce any article in whole or in part. Paid advertisements do not represent an endorsement by Tumbleweeds Magazine. Articles express the opinion of the author and not necessarily that of the publisher.



# Contents

04

**Notes from Jen**  
Love and Caregiving

24

**Book Nook**  
An excerpt from *Short Front Legs*

**Preschool**  
Conversations in Castle Park Part 3

06

**Cultural Heritage & Traditions**  
New Mexico Holiday Traditions

26

08

**Family Voices**  
Resolutions

28

**Noisy Acorns**  
Grandparents and Kin  
Raising Children

**Voces de la Familia**  
Resoluciones

10

**News Brief**

31

13

**2024 School and Academic  
Support Guide**

32

**2023 - 2024  
Winter Calendar**

**School Directory**

14

**Be a Part of Tumbleweeds Magazine!**  
Spring 2024 Issue Deadlines

14

**Music Education**  
The True Value of Music

**Literacy**  
The Level Up Reading Challenge

16

## POSTED

**Sonia Parsons wins  
Thankfulness Social Media Contest!**  
To celebrate the holiday season, *Tumbleweeds* held the "Thankfulness" contest on our social media channels and asked our followers to tell us what they are most thankful for.

Many followers responded with lovely sentiments and we loved seeing all of the responses! Ultimately, Sonia Parsons was drawn as this year's winner.

Sonia said she was most thankful for her community of mom friends. Sonia's prize will be a gift card to the movies!



**ARE YOU INTERESTED IN CONTRIBUTING AN ARTICLE?  
OR DO YOU HAVE A STORY IDEA?**  
Contact [Jen@TumbleweedsMag.com](mailto:Jen@TumbleweedsMag.com)  
Article Submissions Deadline: **February 1, 2024**

**DO YOU WANT YOUR PRODUCT OR SERVICE SHOWCASED  
IN THE MAGAZINE?**  
[Advertising@TumbleweedsMag.com](mailto:Advertising@TumbleweedsMag.com)

Guide to Summer Activities, Camps, & Programs: **February 1, 2024**  
Print Ad Reservations & Copy Deadline: **February 1, 2024**  
Online Ad Reservations & Copy Deadline: **February 15, 2024**

**STAY CONNECTED YEAR ROUND.**  
Subscribe to our newsletter.  
Visit [TumbleweedsMag.com](http://TumbleweedsMag.com)

**ON THE COVER:**  
5 year old Xavier Garcia and 3 year old Lucia Garcia are cuddling up with Golden Labrador puppies. All the puppies will be joining their new families right in time for Christmas. Visit the puppies' livestream at [YouTube.com/@HighDesertLabradors](https://www.youtube.com/@HighDesertLabradors).  
Photo by Kitty Leaken.

**ARTWORK IN THIS ISSUE:**  
*Tumbleweeds Magazine* partnered with Art School Santa Fe, Dragonfly Art Studio and JF Mazur Studio to share children and teen artwork. Art School Santa Fe offers courses in numerous genres including illustration, creature design, fantasy art, comic book drawing, animals, landscapes and cartooning. Dragonfly Art Studio is a place where kids and adults develop their creative talent in a fun and stimulating environment. JF Mazur Studio offers children's art workshops and private painting classes. See more artwork on our website, [TumbleweedsMag.com](http://TumbleweedsMag.com).



# Notes from *Jen* & Caregiving

I learned many things from my mother, Terry, including how to be a fierce advocate for those in need of medical care. Before she had children, my mom was a nurse. Her specialty and passion was caring for premature babies in the neonatal intensive care unit (NICU). Her purpose was giving those sweet babies the absolute best care to increase their chances of survival and to send them home with their parents.

Caring for premature babies during the early seventies required courage and grit. Survival among infants weighing less than 1,000 grams at birth went from less than 10 percent in the sixties, before assisted ventilation and the establishment of the NICU, to approximately 35 percent in the mid-seventies. Improvements in prenatal care was another important development during this time. My mom often told me stories about how she never wanted to give up on those babies. When they drifted to sleep in her arms during a feeding, she would wake them up by rubbing their feet to make sure they ate enough formula per hour. My mom explained the importance of checking their temperature and their ventilators regularly to make sure they weren't laboring too much and were as



*My mom (center) was featured in the Fresno Bee in 1973.*

comfortable as possible. There was no detail that went unnoticed.

By age 23, my mom was the head nurse of the NICU and the hospital was providing her with career growth opportunities. But like many women of the time, she decided after having my older sister to become a stay-at-home mom. A couple of years later, I joined the family and her intentions of going back to the NICU faded as life became more complicated.

My dad, John, owned a small business and needed reliable administrative support, so my mom went back to work to support the family business. While her contributions allowed the business to grow and prosper, it also gave her flexibility so she could pick us kids up from school and take us to activities. Now, as a parent myself, I see the value of having flexibility—especially with young children.

By the time I was eight, my maternal grandmother, Beverly, was diagnosed with Parkinsons. My mom's nursing skills and passion came roaring back helping her parents with navigating the healthcare system, doing medical research, and making home improvements, so Beverly could live comfortably. By the time I was in middle school, my grandparents had in-home care. By the time I was in high school, my grandmother was in an assisted living facility. By the time I was a senior in high school, my grandmother had passed away. Parkinsons is a horrible disease, but I witnessed the care my mother gave to her mother, which is



*John and Terry enjoying the Santa Fe Plaza.*

the most powerful demonstration of love and respect.

Within the next decade, my father, John, was hospitalized with viral meningitis and consequently had encephalitis. Again, my mom turned nurse and cared for my father as he recovered. Then her father, Doyle, started showing signs of dementia, which required her attention. As his dementia grew worse, my mom was determined to support his independence for as long as possible. Eventually, it was not safe for my grandfather to live alone, and he moved into a memory care unit where he kept everyone entertained with the same joke

every ten minutes or so. She visited and advocated for him until the end.

As she navigated care and support for my grandfather, my dad had a massive stroke. His prognosis was not good. The doctors told us that he would never walk or talk again. He may not survive. I remember my mom whispering under her breath, "That's what they would say about the babies."

Almost 20 years later, my dad is alive. He walks, talks, goes to the gym, plays with his grandchildren, travels, cooks and even helps out with the laundry. Yes, he is disabled, but his life has so much value. I truly believe that he is alive today because of the power of his caregiver: my mom.

While my mom was a fierce advocate and caregiver for her own mother, father, and husband, stress and exhaustion comes with being a caregiver, and it takes a toll. It is critical to provide respite and selfcare opportunities to caregivers. My mom is tired, and I see the years of worry in her eyes. I also see that my time to help is here. I've been blessed to have my mom as a role model, and I hope I am just as tenacious of a caregiver as her.

Many New Mexicans are family caregivers. There is what is called the "traditional sandwich generation," which includes those sandwiched between aging parents who need care or help and their own children. This is now me! Then there is the "club sandwich generation," which includes those in their forties, fifties or sixties sandwiched between aging parents, adult children, and grandchildren, or those in their twenties, thirties and forties, with



*Jen's favorite photograph of her mother.*



*At her late father's funeral, Terry received the American Flag in honor of his service in World War II.*





Accompanied by my niece and nephew, this was mom's last visit with her dad before he passed away in 2015.

young children, aging parents, and grandparents. My mom survived the club sandwich.

This holiday season, consider giving the gift of respite for a family caregiver. It could be as simple as providing companionship by reading a book or doing a puzzle with a family member in need. You may want to visit a senior center and volunteer. You may want to train your dog to become a certified therapy dog and do regular visits to an assisted living facility. You may decide to volunteer as an Ombudsman and advocate for residents in nursing facilities. The gift of our time is precious, as are our elders.

While life will always throw us curve balls, *Tumbleweeds* will strive to provide families with the resources, and, hopefully, the inspiration to make it through the tough times and ultimately thrive. We know how important it is to have the best resources at your fingertips. Every family goes through different phases and no one journey is the same, but there are similarities and ways our community can come together.

The *Tumbleweeds* inter issue features tips for blended families (p. 08), the realities of grandparents raising grandchildren (p. 28), and the beautiful holiday traditions around New Mexico. (p. 26) It also includes our annual School Guide and Academic Support Directory to help families make informed decisions about their children's education. A special thank you to our contributors for sharing their stories with our readers, and to our advertisers who make *Tumbleweeds* possible. We hope *Tumbleweeds* will continue to be your go-to family resource for years to come.

Cordially,

*Jen*

*P.S. Love you, Mom.*

”

*“There are only four kinds of people in the world. Those who have been caregivers. Those who are currently caregivers. Those who will be caregivers, and those who will need a caregiver.”*

— *Rosalyn Carter*

“



**DOG  
TRAINING  
ELITE**

OBEDIENCE & MANNERS TRAINING  
ACTIVITIES TRAINING + MORE!

*DogTrainingElite.com*  
*newmexico@dogtrainingelite.com*  
**505.207.0383**





Early Childhood

# Conversations in Castle Park

Spaces for Small People

ANNABELLE BLACK DELFIN

I was walking with my neighbor through Castle Park recently. She and I were discussing the changes that were occurring with the play spaces in the park, our grandchildren, and other happenings. She told me that she wanted to support her grandson, who is four, in writing and drawing. She said he is just not that interested. I suggested that she set up a learning center for him in her home. This concept is considered an early childhood educational best practice for toddlers and small children, i.e., young children need defined spaces that are in proportion to their body size. Young children are drawn to small spaces and miniature things that are arranged to be accessible. A young child is very unlikely to play house in a large space like a warehouse, but provide a child-size house structure and the play will begin spontaneously.

There is a great deal of research that supports this notion. In more structured educational and care settings, these small, child-size spaces are often called learning centers. The idea behind learning centers is that a small, child-size space is defined spatially and thematically, or by what early childhood education calls learning domains. The space is filled with intentional items, such as art supplies for an art center, legos and magnatiles in a fine motor manipulatives center, or costumes in a dramatic play center.

## Early Childhood Learning Domains:

Large areas of growth and development that are foundational for later academic subject areas for learning.

Cognitive, Reasoning, Logic, Problem Solving, Creativity

Language, Speech / Communication / Reception and Expression

Social and Emotional Skills, Self-Regulation, Empathy

Fine Motor Physical Skills, Gross Motor Physical Skills

Disposition, Temperament, Approach to Learning

Sometimes, especially in the recent decade, early literacy will be listed as a domain. Often early literacy is included under cognitive domain and sometimes it is under communication.

Recently, Arely Mercado, lead PreK Teacher at First Presbyterian Child Development Center, presented at the New Mexico Association for the Education of Young Children (NAEYC) conference. She explained how learning centers can be intentionally designed to support learning and development across domains. Below are a few examples from her presentation.

Learning Center	Learning Domain
Dramatic Play Center	<ul style="list-style-type: none"><li>• Cognitive</li><li>• Language and Communication</li><li>• Social/Emotional</li><li>• Literacy and Writing</li></ul>
Writing Center	<ul style="list-style-type: none"><li>• Fine Motor</li><li>• Cognitive</li><li>• Social/Emotional</li><li>• Literacy</li></ul>
Art Center	<ul style="list-style-type: none"><li>• Fine Motor</li><li>• Language and Communication</li><li>• Cognitive</li><li>• Literacy</li></ul>

The Santa Fe Children's Museum's exhibits and play areas include many intentionally designed small space learning centers. The toddler area has movable foam and cushions which children spontaneously arrange into small play spaces. Other areas in the museum are adult-constructed small spaces or learning centers, such as Discovery Market and Uncle Connor's Construction Office.





*The Santa Fe Children's Museum incorporates learning centers into their exhibits.*

These defined, contained spaces are naturally inviting to children, “creating opportunities for imaginative and unstructured play,” says Hannah Hausman, the Children’s Museum executive director.

The Santa Fe Children’s Museum is currently undergoing a redesign of the outdoor space. One of the staples of this space was a small adobe casita with rustic wood block furniture. This was often the site of many active pretend play scenarios, where you could hear children taking on familial roles and making pancakes and biscochitos as they played. The casita has been removed to make way for a new accessible pathway through the outdoor area, but there are plans for other new small space learning centers on the horizon. Hausman explains, “Incorporating small child-size spaces into the new outdoor space design is especially important for children’s engagement with the space. In this new outdoor area, we want to build environments that invite kids in and extend the play experience through interactions in nature.”

Learning centers can be incorporated into a home environment, too. Children enjoy having a designated space with child-size furniture and access to play materials. A small table and chair with art and writing supplies in a corner of the living room can become an art and writing center



*Access to writing supplies provokes early writing.*

that is accessible to your toddler or preschooler.

When materials are out and accessible, that serves as an open invitation to a young child to sit down and begin creating and playing with the materials. There are many ways to define a small space designated for a child, such as using low bookshelves and other furniture as the boundaries of the space or hanging cloth or a mosquito netting to define a cozy book nook. Another option involves using a preschool sensory table or plastic storage container with a lid as the site of miniature play spaces, such as this fairyland found at the Santa Fe Children’s Museum. The sensory table or storage container can be filled with small animal and people figures, sand, water, mud, or even snow to make miniature landscapes for imaginative play. There are other ways to create small spaces for children. Dr. Wenjie Wang of the New Mexico Center of Excellence for Early Childhood Education shared an example for home, called **Prop Boxes: Mini-Learning Centers** ([bit.ly/3OnfMU0](https://bit.ly/3OnfMU0)). Creating small-



*A mosquito netting defines a cozy book nook.*

size spaces for children at home has many benefits such as promoting independence, because when young children can easily reach and access learning and play materials, they are more likely to engage with those materials on their own. Learning centers can encourage children to “explore and make their own discoveries” says Dr. Wang.

Organized learning centers also teach children about order, especially when it is time for clean up. Learning centers usually have many small parts, whether art supplies, toys, manipulatives, or other items. If these small parts have an organized storage system, like labeled (words and pictures) bins or baskets, then children can exercise their early math skills of sorting and classifying when it is time to put things away.



*Children are natural builders of small spaces.*

A few weeks after my neighbor asked me for tips on engaging her grandson in writing and art, she shared with me that she had set up a small learning center in her kitchen. She put out markers, colored paper, pens, crayons, glitter glue and pencils on a small table that had been in her garage. She told me that she did not have to introduce the materials to him—he knew exactly what this space was for. Within days, her refrigerator was covered with examples of her grandson’s drawings, paintings, writings, and even a map that he made of the neighborhood.

*Annabelle Black Delfin has spent her life in New Mexico. Since starting her first babysitting enterprise as a teen, she has been interested in how young children grow and develop. She has run after-school programs, summer camps, youth-service nonprofits, and childcare, among other programs for kids in Santa Fe. Annabelle is the mom of two Santa Fe kids and has a four-year-old granddaughter. Annabelle is currently the director of research and program development at the New Mexico Center of Excellence in Early Childhood Education of WNMU, and a graduate adjunct professor at NMSU in the field of early childhood.*

# Music Makes Happy

**Winter Session of Music Classes**  
**for Kids and Adults starts January 8**  
**at**  
**Queen Bee Music Association**

guitar · ukulele · mandolin · fiddle · banjo · percussion  
voice · songwriting · ensembles · theory

[queenbeemusicassociation.org](https://queenbeemusicassociation.org)



Family Voices

# Resolutions

E. QUINONES

The truth will set you free, but first it will piss you off.

— Gloria Steinam

We have a big beautiful blended family but it wasn't always that way, as you may have learned in the last issue of *Tumbleweeds*. When my spouse and I got together, we had five kids under the age of 11 (10, 9, 8, 7, and 2), and we had three other biological parents in the mix. Now, our kids are in their twenties and the other parents are rarely in our lives. I'm sharing my reflections as I look back on our recent past with the goal of giving you hope for your future as you work to try to blend your families into one fairytale relationship. Spoiler alert: It doesn't magically happen the way it's shown in the movies, but it is possible. When our kids were in middle and high school, we were constantly interacting

with the other biological parents. The topics were often challenging and the conversations were frustrating. We realized early on that if we spoke negatively about the other parents, our kids would know. Not that we would speak negatively about them around the kids or that the kids would hear us complaining about them. It was about the energy they would feel from us when simply talking about their parents in a random conversation. Just like when you don't like someone and the two of you happen to be at the same place at the same time—think of a family function, a work situation, or a social event with mutual friends. You don't have to announce to everyone



in the room that you don't like that person; everyone knows because of the negative energy you are adding to the room. It's uncomfortable to be around, for everyone.

In our clever minds we found a solution for our private conversations. We created secret names for them so we could speak freely without saying their names. And, the names actually emphasized how awful we felt about them. This was OK, right? We thought so—at first. An example of a private conversation my spouse and I would have would go something like this: "Ugh, Ursula, the sea witch, called today and wants

to exchange a day next week. We have plans that she knows about! I wish she would just leave them be!" or "Yuck, Darth Vader messaged today and asked what happened last week between the kids. I wish he would mind his own business." It seemed pretty benign. We continued along with this for a few months, and had some laughs playing with other villain names. It wasn't until one night when we were having this same type of conversation that we realized how we felt when we used the code names. At first, we had felt clever and a bit sly, but as time went on we felt worse. Because we're still talking bad about them—the other parents—and inadvertently our kids.







My spouse and I had a few conversations about how we were feeling and we decided to stop talking negatively about the other parents at all. We agreed to do our best to speak factually, without adding in our judgment or drama. I know it seems like a little thing that, after all, our kids never knew, but it made a big difference. Simply deciding to remove the negative energy made interactions easier to handle. It didn't change who the other parents were or what they were asking. But it did change the power we had unknowingly given them—and we had given them a lot. It was time to retake our power.

The very next time we had an interaction with another parent, it took us by surprise about how quickly we were frustrated, annoyed, and irritated from the moment we saw their name pop up on our phone. We immediately recognized the feelings of intrusion into our time with the kids. We also recognized the negative energy that took over our bodies at that moment. Wow, it was powerful. Now comes the hard part: choosing how to behave differently. It took practice, and we weren't perfect. But over time, we were less charged when we had to deal with the other parents. Our conversations were less animated and honestly somewhat boring and matter-of-fact when we discussed co-parenting situations.

Fast forward to this week, as I was finalizing this story for submission to *Tumbleweeds*, my older son stopped by my office and asked me what I was working on.

I could have easily diverted the conversation and moved on to a different subject, but I paused. I made a conscious decision to tell him the general topic of this story and ask him if he wanted to read it. After all, this is me confessing to something that I'm not proud of to my adult son. And it was a topic that could have easily remained in the shadows of our relationship. But,

it was time to bring it out into the open and release it.

He read it on my computer and quickly began providing editing suggestions. After a few moments he stopped and re-read the article, and then we had a conversation. He shared these sentiments: "Wow, I never knew this was going on. But I do remember feeling caught in the middle a lot while we were growing up. It was hard when you and my dad wouldn't talk with each other and we had to be the bridge in between. It felt like I grew up quickly. I like the sentiment of your story, and I'm glad you are sharing it with others. A lot of kids now are in the same situation we were in then. And, if your story can help raise the awareness of parents now, then I think that's a win."

Hearing his words helped heal an old shame wound that I didn't realize was still there. This interaction brought me closer to being the person I wanted to be all those years ago. I am thankful.

On that note, as people around you are making resolutions about how they want to be in the new year, I invite you to think about areas of your life where you are adding in negativity, drama, or extra negative emotions to situations that are unnecessary. You could make a resolution to do it differently in the new year, and the best part is that you will reap all the benefits. Others may notice you are slightly less grouchy or have a little smile when you had a frown in the past. Oftentimes, a small change can make a big difference in our lives. I hope you'll try it.

*Written by E. Quinones. This is a true story and reflection from the author, who has asked to remain anonymous.*



Art provides skills for self-expression, strengthens self-confidence, adds appreciation for the world, and nurtures creative thinking!




A PLACE WHERE KIDS CAN EXPRESS THEMSELVES THROUGH ART AND DISCOVER THEIR CREATIVITY

- [Summer Camps](#)
- [After School Art Classes](#)
- ["No School" Art Days](#)
- [Birthday Parties](#)
- [Private and Group Classes](#)
- [Holiday Workshops](#)

[www.Dragonflyartsf.com](http://www.Dragonflyartsf.com)

**505-670-5019**



TEACHER LED, STUDENT DRIVEN

**DESERT MONTESSORI SCHOOL**

YOUR ACADEMIC HOME THROUGH 6TH GRADE

[WWW.DESERTMONTESSORI.COM](http://WWW.DESERTMONTESSORI.COM)



JF Mazur Studio courtesy photo.



Voces de Familia

# Resoluciones

E. QUINONES

La libertad libera, pero primero enfada.

— Gloria Steinam



Tenemos una gran familia combinada, bella, pero no siempre fue así como talvez se enteró en la última edición de *Tumbleweeds*. Cuando mi esposo y yo nos juntamos, teníamos cinco chicos menores de 11 años (10, 9, 8, 7 y 2), con otros tres padres biológicos en la combinación. Ahora, nuestros hijos ya están en sus años 20 y los otros padres rara vez están en nuestras vidas. Comparto mis reflexiones sobre los últimos años con el propósito de infundir esperanzas para su futuro conforme trata que su familia combinada se convierta en una relación de cuentos de hadas. Le advierto que

esto no sucede por arte de magia como en las películas; sin embargo, es posible.

Cuando nuestros hijos estaban en las escuelas media y preparatoria, constantemente interactuábamos con los otros padres biológicos. Con frecuencia, los temas eran desafiantes y las conversaciones, frustrantes. Muy pronto nos dimos cuenta que si hablábamos negativamente de los otros padres, nuestros hijos lo sabrían. No es que habláramos negativamente de ellos alrededor de los chicos o que éstos nos escucharan quejándonos de ellos. Era la energía que los chicos podían

sentir de nosotros cuando simplemente hablábamos de sus padres en alguna conversación. Así como cuando a uno no le gusta una persona y las dos coinciden en un mismo lugar al mismo tiempo — en una reunión familiar o situación de trabajo o evento social con amigos en común. Uno no tiene que anunciar a todos que no le gusta cierta persona; todos se dan cuenta debido a la energía negativa que uno pone en el ambiente. Es incómodo para todos estar en ese espacio.

Creyéndonos listos, encontramos una solución para nuestras conversaciones privadas: nombres secretos para referirnos a ellos con libertad. Los nombres realmente enfatizaban lo terrible que nos sentíamos sobre ellos. ¿Era eso correcto? Pensamos que sí—al principio.

Por ejemplo, una conversación privada entre mi esposo y yo era algo así: “Uf, Úrsula, la bruja marina, llamó hoy y quiere cambiar un día la semana entrante. ¡Ya sabe que tenemos planes! Quisiera que los dejara así!” o “Puj, Darth Vader mandó un mensaje hoy y preguntó qué pasó entre los niños la semana pasada. Quisiera que se ocupara de lo suyo”. Parecía benigno. Seguimos con eso unos cuantos meses y nos divertimos jugando con otros nombres de villanos. No fue sino hasta una noche cuando conversábamos en esa forma que nos dimos cuenta de lo que sentíamos al usar nombres en clave. Al principio nos sentíamos ingeniosos y un poquito astutos, pero con el tiempo nos sentimos peor porque todavía estábamos hablando mal de ellos —los

otros padres— e inadvertidamente de nuestros hijos.

Mi esposo y yo tuvimos unos cuantas conversaciones sobre lo que sentíamos y decidimos dejar de hablar negativamente por completo sobre los otros padres. Acordamos hacer lo mejor posible para hablar de los hechos, sin agregar nuestra opinión o drama. Sé que parece una pequeñez, de la cual, después de todo, nuestros hijos nunca se enteraron, pero hizo una gran diferencia. Simplemente, decidir remover la energía negativa hizo más fácil conducir nuestras interacciones. No cambió a los otros padres o lo que pedían. Sin embargo, cambió el poder que, sin saberlo, les habíamos dado —y les habíamos dado mucho. Era hora de recuperar nuestra fuerza.

La próxima vez que interactuamos con uno de ellos, nos sorprendió lo pronto que nos sentimos frustrados, enfadados o exasperados a partir del momento en que vimos que su nombre apareció en el teléfono. Inmediatamente, reconocimos los sentimientos de intrusión en nuestro tiempo con los niños. También reconocimos la energía negativa que se apoderó de nuestros cuerpos en ese momento. Guau, fue fuerte. Ahora viene la parte difícil: Escoger un comportamiento diferente. Tomó práctica y no fuimos perfectos. Pero con el tiempo estuvimos más ligeros cuando tuvimos que tratar con los otros padres. Nuestras conversaciones no eran tan animadas y, honestamente, eran un poco aburridas y realistas cuando hablábamos de situaciones de crianza.





En estos días, cuando estaba por terminar la historia para presentarla a *Tumbleweeds*, mi hijo mayor pasó por mi oficina y me preguntó en qué estaba trabajando.

Pude haber cambiado el tema, pero me detuve. Tomé una decisión consciente para decirle el tema general de esta historia y preguntarle si quería leerla. Después de todo, ésta soy yo confesándole a mi hijo adulto algo de lo cual no estoy orgullosa. Era un tema que pudo haber permanecido oculto en nuestra relación. Pero era tiempo para sacarlo a la luz y soltarlo.

Lo leyó en mi computadora y rápidamente empezó a sugerir cambios. En unos cuantos momentos paró y releyó el artículo y, después, conversamos. Compartió estos sentimientos: “Guau, nunca supe que esto estaba ocurriendo. Pero sí recuerdo sentirme atrapado en el medio muchas veces cuando estábamos chiquitos. Era difícil cuando tú y mi papá no se hablaban y nosotros teníamos que ser el puente entre ustedes. Se sintió como que maduré rápidamente. Me gusta el sentimiento de tu historia y me alegra que la compartas con los demás. Muchos chicos ahora están en la misma situación en la que nosotros estuvimos entonces. Y, si tu historia puede ayudar a crear consciencia en los padres ahora, entonces creo que ése es un logro”.

Escuchar sus palabras ayudó a sanar una vieja herida de vergüenza que no me había dado cuenta todavía estaba ahí. Esta conversación me acercó más a ser la persona que quería ser hace tantos años. Estoy agradecida.

Dicho eso, cuando las personas a su alrededor estén haciendo resoluciones de cómo quieren ser en el nuevo año, le invito a que piense sobre aspectos en su vida a los cuales usted les agrega negatividad, drama o emociones extra negativas innecesarias. Podría tomar la resolución de hacerlo de manera diferente en el nuevo año y la mejor parte es que usted obtendría todos los beneficios. Puede que otros observen que está menos gruñón o que ahora en lugar del ceño fruncido del pasado tiene una sonrisita. A menudo, un pequeño cambio puede hacer una gran diferencia en nuestras vidas. Espero que lo intente.

*Por E. Quinones Traducción por Flor de María Oliva*

# Childcare you can trust like family

## Discover the joys of hosting an au pair

### What is an au pair?

An au pair is an educated young person from abroad who lives with you in your home for up to two years, cares for your children and becomes a special part of your family. Welcoming an au pair is a chance to bring a piece of the world into your home and heart—and to breathe new life into your family’s routine.

### Flexibility

An au pair can provide up to 45 hours per week of childcare on a schedule you decide, including early morning, evening and weekend coverage.

### Trust

Because an au pair lives in your home, mutual trust develops more quickly than with a daycare provider or nanny.

### Culture

Au pairs come from many countries all over the world and can share their language and culture with your family, fostering a sense of curiosity and global perspective.



Scan for more information!





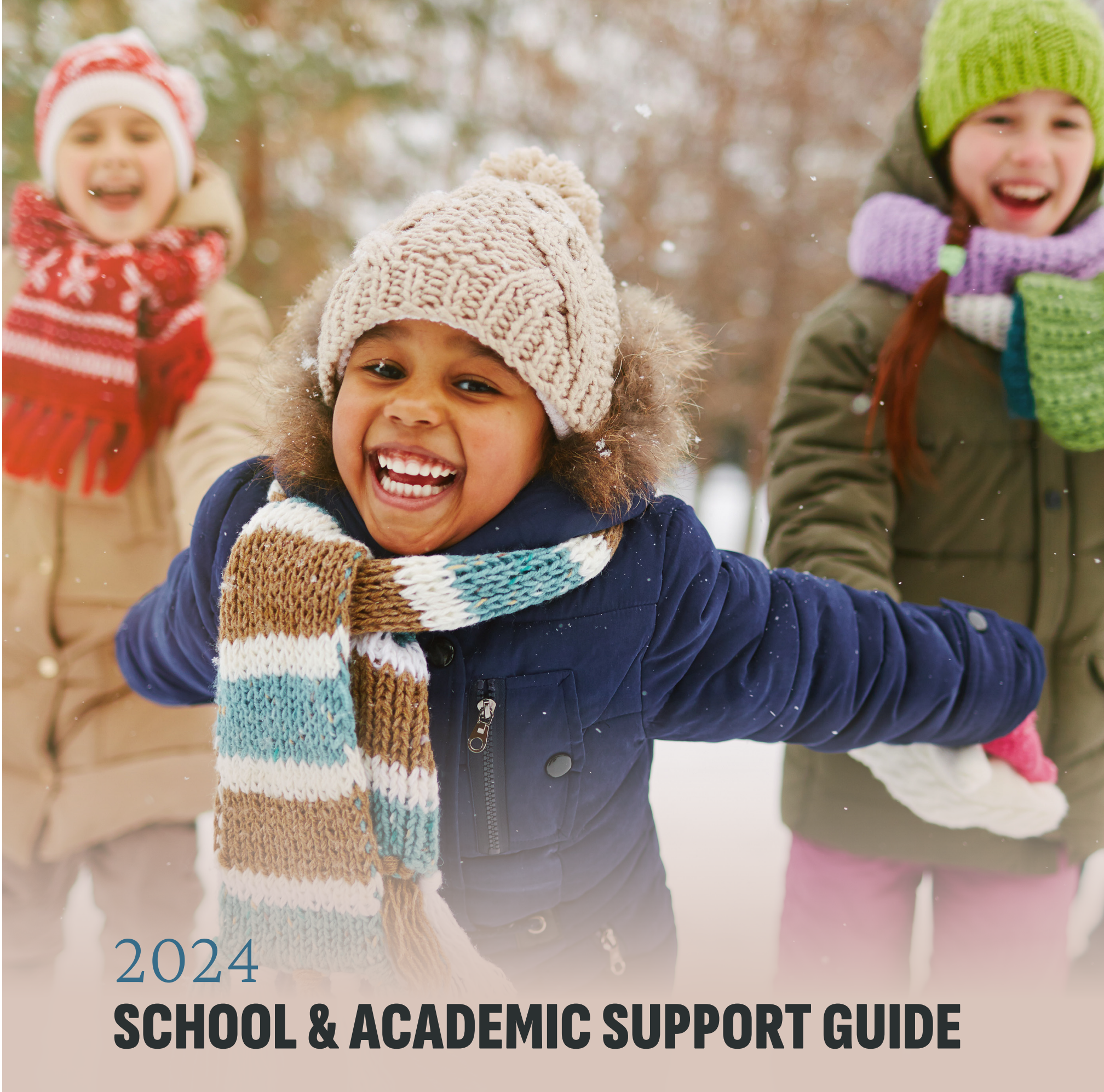
DISCOVER  
*Albuquerque*  
LIKE NEVER BEFORE



LAUNCH YOUR FAMILY ADVENTURE WITH

ALBUQUERQUE! [albuquerque.com](http://albuquerque.com)





2024

# SCHOOL & ACADEMIC SUPPORT GUIDE

The **#1 Guide** for Santa Fe Public,  
Charter, and Private Schools from  
Early Childhood through High School



LEGEND

- EARLY CHILDHOOD
- ELEMENTARY SCHOOL
- PRE-KINDERGARTEN
- MIDDLE SCHOOL
- KINDERGARTEN
- HIGH SCHOOL

CHARTER SCHOOLS

MONTE DEL SOL CHARTER SCHOOL

The Monte del Sol Charter School (MDS) is a small school community where every student is known and respected. Currently in its 24th year, curriculum includes advanced placement (AP) dual credit, and honors courses in humanities and STEM, and experiential, outdoor, and project-based learning. The Mentorship Program supports student-driven learning in multiple subjects. The Sustainable College and Career Readiness Program provides career and technical training with dual credit in sustainability, computer technologies, and culinary arts. Ten teaching artists help foster student’s creative expression. Additional core offerings include International trips and athletics. The campus features gardens, a hydroponic greenhouse, and a daily dose of the outdoors. Admission by lottery. 505-982-5225 | mdscs.org

MIDDLE SCHOOL

HIGH SCHOOL

NEW MEXICO SCHOOL FOR THE ARTS

NMSA is New Mexico’s only statewide, free public arts high school that merges rigorous academics. In 2023, NMSA students surpassed state and national averages in their SAT scores—an achievement that highlights how studying the arts alongside other subjects significantly boosts student achievement. At NMSA, artists in grades 9-12 immerse themselves in their chosen discipline—Creative Writing & Literature, Dance, Music, Theatre, or Visual Arts. NMSA’s students represent 39 communities and 17 Native American nations from all three New Mexico congressional districts. The school’s residential program provides housing for students living more than 65 miles from Santa Fe. 505-310-4194 | nmschoolforthearts.org

HIGH SCHOOL

THE ACADEMY FOR TECHNOLOGY AND THE CLASSICS

The Academy for Technology and the Classics (ATC) was founded in 2000 to provide a classical and technology-based approach to education in a public school setting. The ATC aims to integrate students with a variety of learning styles and personal strengths in order to foster communication, literacy, critical thinking, and the personal skills necessary for college success. ATC is an inclusive community of scholars who boldly inspire and empower each other to think critically, build imaginatively, and courageously co-create a just world. The ATC cultivates fearless learners. 505-473-4282 | atcschool.org

MIDDLE SCHOOL

HIGH SCHOOL

THE MASTERS PROGRAM EARLY COLLEGE CHARTER SCHOOL

The Masters Program Early College Charter School (TMP) has 260 students in ninth through 12th grade on the Santa Fe Community College Campus. Students take the core high school courses required by the state with the TMP faculty and may also take 11 college elective courses with college instructors. In living with a college schedule, students may have significant free time that they will manage by themselves. If students want the responsibility of managing their time on a college campus, TMP is right for them. 505-428-7320 | tmpsantafe.org

HIGH SCHOOL

THRIVE COMMUNITY SCHOOL

The THRIVE Community School (THRIVE) is a diverse and affirming kindergarten through eighth grade learning community that embraces social and emotional learning practices and utilizes evidence-based teaching to advance educational equity. By using innovative approaches to drive academic achievement, eliminate disparities in student outcomes, and reinforce a

The True Value of Music

WHETHER YOU CREATE SOLO OR WITH FAMILY OR FRIENDS, IT’S PRICELESS.

BRIAN NELSON

Music. It’s all around us. Whether on the radio as we drive, in the background as we shop, or in our ears as we exercise, the perfect song can motivate and console, inspire and relax. Many people consider themselves music lovers, but in this day and age that typically means a connoisseur of recorded songs and albums. The occurrence of picking tunes on a porch with family and friends, of experiencing music by *playing* it rather than listening, is not as common as it once was. There’s no doubt that the accessibility of recorded music contributes to this shift, but there is another factor here: Many people don’t believe that playing an instrument is something they can do. This misconception is far from the truth.



Adult students learn guitar as a group during a weekly guitar class at Queen Bee Music Association. photo credit: Lindsay Taylor

Learning an instrument is something anyone can do, no matter their age, ability, or experience. There are certainly varying degrees of natural talent, and a variety of motivations and endgoals, but none of this detracts from the underlying fact that anyone can play music. And many of the benefits that come from doing it are available regardless of how well it’s done.



Collaboration often makes the best final song. Here, two students at Queen Bee’s Summer Jam Camp work together on a beat using a step sequencer. photo credit: Brian Nelson

There are a range of beneficial health effects connected with a personal musical practice, including reducing stress, relieving depression, improving blood circulation, and increasing cognitive ability. None of these are affected by the musician’s skill level.

Being skilled at what we do is something many of us strive toward, but enjoyment can be found while playing music no matter the level of proficiency. Singing and strumming along with a favorite song offers a great benefit in itself, but playing music with others delivers a higher reward as an instrumentalist.

Playing music with others can be done just about anywhere. Be it around a campfire with friends, at a local hosted jam, or as a member of a community

choir or orchestra, there is a genuine sense of connection and camaraderie that comes through playing music together. Historically, one of the most prevalent music group scenarios is the family band. Much of the traditional music played in America is and has been played, taught, and passed on via the vessel of the family band. Family members divvy up the roles of the band, each learning different instruments, and some focusing on writing, selecting, and arranging songs. Typically all sing together, utilizing what’s known as blood harmony, a distinct harmonic resonance that happens when related individuals sing together.

Not everyone grows up a part of a family band, and oftentimes the most difficult step in studying an instrument is the first one: where to get started. There are many resources to learn from, be it a friend, a private lesson instructor, or an instructional channel on YouTube, but if the goal is to play music with others, then learning in a group setting can be a great jumpstart toward reaching that goal. Skills such as solid rhythm, following the chords of a song, learning melodies, and being able to sing and play an instrument at the same time, are gained quicker and better by learning





Experimentation on new instruments drives creativity and boosts self confidence. Doing so with a friend makes for a fun bonding experience as well. photo credit: **Brian Nelson**

and practicing them with others. We are supported in a group; our mistakes meld into the communal sound. We learn to be brave, to try our best, and to push ourselves within a class of students united by the goal of learning together. It is never too late to start learning to play an instrument, and benefits can be found at any age. That being said, kids have the opportunity to gain and reinforce additional skills by participating in group music classes. Having social learning experiences outside of the schoolday classroom helps students apply the boundaries and lessons found at school to a new learning environment. The

bond formed by making music together is a great foundation for new friendships, and learning an instrument at a young age can help develop self-confidence, perseverance, and creativity.

When we think of education, the focus is often drawn toward literacy, mathematics, or sciences, but a well-rounded education also focuses on social-emotional development, critical life skills, and exposure to the arts. Northern New Mexico holds an abundance of artistic experiences and educational opportunities, and the musical arts are represented well here. Organizations such as Performance Santa Fe, the Lensic Performing Arts Center, and Queen Bee Music Association provide a large array of music education engagements for residents and visitors alike.

There are lots of ways to be creative. The small business owner developing a unique marketing strategy, the school teacher responding to the learning patterns of their students, and the electrician developing more efficient approaches to get a job done faster are all using their creativity. Humans are wired to be innovators and problem solvers—it is in our nature to create new things, to be inspired by ideas big and small. Having an outlet for creativity, a practice that allows for discipline, growth, and learning, offers no shortage of benefits.

The value of something is often most easily communicated through dollars and cents, and yet so often the things held at the greatest value are impossible to put a price on. Whether developed from a young age or pursued as a new endeavor, a life that incorporates playing music promises growth, creative expression, and without a doubt, value. Creative practices are an integral step toward developing problem solving skills and can help an individual find their voice. They build work ethic and can open up opportunities for friendship, community involvement, scholarships, and personal enjoyment. Making time for a creative outlet can bring balance to the busy lives led by kids and adults alike. Make a doodle, draw a sketch, sing a song, or cook a meal. And whenever possible, share this creativity with the ones around you.



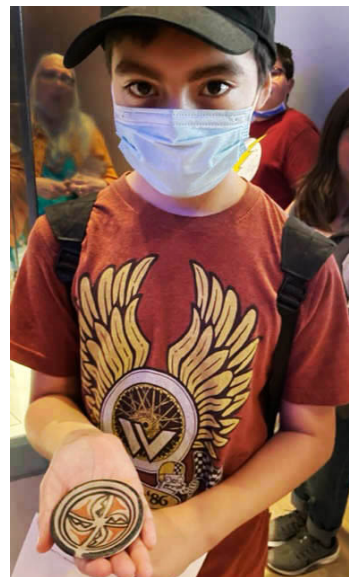
Participants across multiple generations come together to jam traditional fiddle tunes at Queen Bee's hosted old-time jam at Nuckolls Brewing Co. photo credit: **Carol Taylor**

A graduate of the Berklee College of Music in Boston, Brian Nelson has studied a variety of instruments and musical styles for over 25 years. From West African drum and dance to ukulele singalongs to guitar lessons for all ages, he takes his passion for music into every endeavor. With a teaching career spanning 20 years, Brian has worked in a variety of educational situations. He currently serves as the Artistic Director at Queen Bee Music Association where he is also an instructor of guitar, ukulele, and percussion as well as director of Queen Bee's summer camps. When he's not teaching, Brian can be found performing with Glorieta Pines, Todd and the Fox, and Ninjastar.

## A SMALL SCHOOL WHERE EVERY STUDENT IS KNOWN AND RESPECTED

**Lottery is Open!**  
(Closes on February 26)

**Apply  
Now**



AP + Honors + Dual Credit Courses  
Arts Integration + Teaching Artists  
Mentorship + Experiential Education  
Global Literacy + International Trips  
Athletics + Outdoor Learning

Career Technical Education in Stem,  
Sustainability Technologies+ Culinary Arts



**Monte del Sol  
Charter School**  
505.982.5225



# 2024 SCHOOL GUIDE

positive self-concept, THRIVE positions all students to follow the path of their choice. The THRIVE model focuses on building strong foundations in reading and math through small group instruction, developing social and emotional intelligence, and cultivating passions for science and the arts. 505-982-1990 | [thriveschoolsf.org](http://thriveschoolsf.org)

● KINDERGARTEN ● ELEMENTARY SCHOOL  
● MIDDLE SCHOOL

## TIERRA ENCANTADA CHARTER SCHOOL

For more information, visit the school's website. 505-983-3337 | [gotecs.org](http://gotecs.org)

● HIGH SCHOOL

## TURQUOISE TRAIL CHARTER SCHOOL

The Turquoise Trail Charter School (TTCS) is the state's oldest charter school and is as diverse as Santa Fe itself. Students come from Rio Rancho, Las Vegas, Santa Fe and surrounding pueblos to attend one of the highest-achieving institutions. TTCS was voted "Best of Santa Fe", named a New Mexico "Spotlight" School, and was among the top 10% of schools in English Language acquisition. TTCS has rigorous academic standards serving students 3Y Pre-K through 8th grade.

505-986-4000 | [ttschool.org](http://ttschool.org)

● EARLY CHILDHOOD ● PRE-KINDERGARTEN  
● KINDERGARTEN ● ELEMENTARY SCHOOL  
● MIDDLE SCHOOL

# PRIVATE SCHOOLS

## CAMINO DE PAZ MONTESSORI SCHOOL AND FARM

For more information, visit the school's website. 505-747-6707 | [caminodepaz.net](http://caminodepaz.net)

● MIDDLE SCHOOL ● HIGH SCHOOL

## CHILDREN'S GARDEN MONTESSORI

Children's Garden Montessori is a FOCUS Five-Star Montessori school and one of the few Montessori schools to have a state-funded pre-kindergarten program for 3 and 4-year-olds. 75% of the school's families receive state funding. Enrollment for the 2024-2025 school year begins in February 2024. The school has three classrooms — one classroom is for kids 18-months to 3-year-olds, and the other two classrooms are for 3 to 6-year-olds. Children must be 18 months old before September 1, 2024, to enroll.

505 466-1251  
[childrensgardensantafe.com](http://childrensgardensantafe.com)

● EARLY CHILDHOOD ● PRE-KINDERGARTEN  
● KINDERGARTEN

## DESERT MONTESSORI SCHOOL

Established in 1979, Desert Montessori School is a distinctive hub of extraordinary education and community in Santa Fe. Our vision focuses on fostering agency, integrity, and creativity among students, staff, and the broader community. With a forward-thinking approach to Montessori education, a commitment to shared leadership, a welcoming environment, and a robust extracurricular curriculum, DMS is a place where all children can thrive. 505-983-8212 [desertmontessori.com](http://desertmontessori.com)

● EARLY CHILDHOOD ● PRE-KINDERGARTEN  
● KINDERGARTEN ● ELEMENTARY SCHOOL

## FIRST PRESBYTERIAN CHURCH CHILD DEVELOPMENT CENTER

The First Presbyterian Church Child Development Center (Child Development Center) provides an educational program to preschoolers at First Presbyterian Church. The school's enrollment is limited to 80 children, ages 12 months to 5 years, and is open to those of all faiths. The Child Development Center provides a learning environment that fosters children's self-confidence and focuses on each child's individual needs. The Child Development Center collaborates with the Children, Youth, and Families Department of Santa Fe to provide a quality-based program that accommodates the needs of children in the greater Santa Fe area with its economically diverse population. 505-982-8919 | [fpcsantafe.org/cdc](http://fpcsantafe.org/cdc)

● EARLY CHILDHOOD ● PRE-KINDERGARTEN  
● KINDERGARTEN

## GARCIA STREET CLUB SCHOOL

For more information, visit the school's website. 505-983-9512 | [garciastreetclub.com](http://garciastreetclub.com)

● PRE-KINDERGARTEN

## GENTLE SHEPHERD LUTHERAN PRESCHOOL

For more information, visit the school's website. 505-983-9383 [ilc-sfnm.360unite.com](http://ilc-sfnm.360unite.com)

● PRE-KINDERGARTEN

## GROWING UP NEW MEXICO

Growing Up New Mexico provides high-quality early childhood programs, prenatally through age five, to families living in Santa Fe and Rio Arriba Counties. We offer home visiting services, full-day/full-year childcare and Early PreK/PreK, family coaching and referrals to community resources, and free book distribution as an official Dolly Parton's Imagination Library affiliate. All Growing Up New Mexico's programs are universally offered in English and Spanish. Our home visiting, family coaching, and Early PreK/PreK programs are provided for free. We accept New Mexico Early Childhood Education and Care Department (ECECD) child care assistance for our child care program. 505-819-0137 | [growingupnm.org](http://growingupnm.org)

● EARLY CHILDHOOD ● PRE-KINDERGARTEN  
● KINDERGARTEN ● OTHER

# The LEVEL UP Reading Challenge

NEW MEXICO'S QUEST FOR SUPERHERO READERS

SEVERO MARTINEZ, DIRECTOR,  
NMPED LITERACY & HUMANITIES BUREAU



Speaking at the Summer Convening.

To foster a profound love for literature among the youth of New Mexico, the New Mexico Public Education Department (NMPED) has embarked on an ambitious journey with the launch of the Level Up Reading Challenge. This innovative initiative seeks to ignite a passion for reading in students across the state while empowering them to elevate their reading skills to superhero levels.

At the forefront of this thrilling adventure are Ralph the Reader and Ricky the Roadrunner, affectionately known as the mascots of literacy. These beloved characters are on an exhilarating mission, navigating the enchanting landscapes of New Mexico and visiting Structured Literacy Model and Support Schools across the state. Their purpose? To spread the message of the Level Up Reading Challenge and inspire the next generation of Superhero Readers.

A component of the Level Up Reading Challenge is the encouragement for students to read *This Is New Mexico / Este es Nuevo Mexico*, penned by Severo Martinez, Director of the NMPED Literacy and Humanities Bureau. This captivating literary journey delves into the rich cultural tapestry and history of New Mexico and also kindles the curiosity of young minds, urging them to explore the enchantment of reading.

Martinez, the visionary behind this challenge, emphasizes its broader significance: "The Level Up Reading Challenge is more than just a reading initiative; it's a call to action for every child in New Mexico to embrace the power of literacy. We challenge students to rise to the occasion, change their mindset, and work diligently on their reading and writing skills. We want to shine a spotlight on Superhero Readers and provide exciting incentives to encourage every child to level up their literacy."



Ralph the Reader and Ricky the Roadrunner Mascots.

For the NMPED, promoting literacy is paramount. It forms the cornerstone of a child's educational journey and paves the way for lifelong learning. In Ricky the Roadrunner, the department has found a symbol of positivity and the transformative potential of literacy. Through the Level Up Reading Challenge, the department aspires to inspire every child in New Mexico to enhance their literacy skills and embark on a journey of personal growth and achievement.

The NMPED called on all educators—not just those in Structured Literacy Model and Support Schools—to join in this exciting endeavor. Numerous teachers signed up for the challenge and will receive a Ralph the Reader and Ricky the Roadrunner Level Up Reading Challenge classroom kit. This kit includes a classroom set of *This Is New Mexico / Este es Nuevo Mexico* pencils, stickers, Superhero Reader capes, and a classroom pledge that students will sign, making a promise to do their very best regarding reading and writing.

For those interested in witnessing the magic unfold in the classrooms, a comprehensive informational video is available. Everyone is invited to join Ralph





Severo Reading "This is New Mexico/ Este es Nuevo Mexico".

emphasizes the systematic, explicit instruction of phonemic awareness, phonics, fluency, vocabulary, and comprehension. This approach is rooted in the Science of Reading, a body of research that has deepened the understanding of how the brain processes written language and how individuals learn to read. By embracing structured literacy and the Science of Reading, the NMPED has demonstrated a commitment to evidence-based practices that benefit students across the state.

Structured literacy programs, which align with the Science of Reading, provide a foundation for reading instruction that is particularly effective for struggling readers and students with dyslexia. By focusing on the fundamental skills required for reading success, such as sound-symbol correspondence and decoding, students can build a strong literacy foundation. This approach also emphasizes the importance of oral language development, which is essential for comprehension and vocabulary growth. The NMPED's commitment to structured literacy and the Science of Reading ensures that teachers are equipped with the knowledge and tools to support all students in their literacy development, ultimately promoting higher levels of literacy proficiency among New Mexico's youth.

The Science of Reading has transformed the understanding of reading instruction, and the NMPED's embrace of structured literacy aligns with the research and best practices that have emerged from this scientific approach. By providing professional development, resources, and support for teachers to implement structured literacy strategies in the classroom, the NMPED is working to bridge the gap in literacy achievement and empower students to become proficient readers. This comprehensive approach not only benefits students during their formative



Severo packing class kits for all the Structured Literacy Model and Support Schools.

9,000 educators and administrators enrolled in Science of Reading training. The NMPED also provides coaching support to over 1,200 educators across the state, serving 25,000 students in kindergarten through 5th grade.

Structured Literacy New Mexico continues to increase the number of students achieving reading proficiency and reduce the number of students requiring special education services statewide. Senate Bill 398, signed into law in 2019, supports the work of this initiative by requiring every first-grade student to be screened for dyslexia. SB398 also states that every public school district and charter school must train administrators and teachers who teach reading to implement appropriate evidence-based reading interventions.

The Level Up Reading Challenge is more than an initiative; it's an invitation for every child in New Mexico to become a Superhero Reader. With the support of the governor, educators, students, and the enduring power of literature, New Mexico is poised to witness a literary renaissance that will shape the future of its children for generations to come.

Severo Martinez, Director, NMPED Literacy & Humanities Bureau, was born, raised, and educated in New Mexico. As a lifelong educator and author, he began as a high school tutor for underserved populations in rural Northern New Mexico. He graduated from the University of New Mexico with degrees in Bilingual Education, TESOL, and Spanish, and taught in Albuquerque's South Valley at Dolores Gonzales Elementary. In 2014, Severo began his career with the New Mexico Public Education Department and has worked with the Assessment Bureau, School Improvement, and has been the Literacy and Humanities Director since 2018. Severo is also a musician who has performed across the Southwest and established the Soy Nuevo Mexicano Scholarship Fund to benefit New Mexico high school students. "Get lost in a book and let it take you on a new adventure. Reading can take you to a faraway place and help you learn about your local community. There are no limits!"

the Reader and Ricky the Roadrunner on their literacy adventure by visiting the program's blog. Martinez also hosts a read-along on the "Storytime with Severo" YouTube channel.

The NMPED has made significant strides in improving literacy education through its implementation of structured literacy programs. Structured literacy is an evidence-based approach to teaching reading that



Severo introduces Ricky the Roadrunner. (Played by Secretary Arsenio Romero)



Severo as Ralph the Reader on Ralph & Ricky's New Mexico Adventure.

# Santa Fe Christian

Providing a Gospel-centered, academically superior, and expanding educational experience.

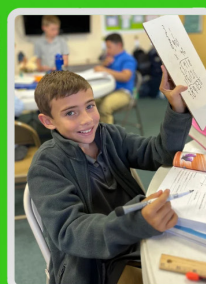


- 🐾 K-6th
- 🐾 Nationally Ranked Test Scores
- 🐾 Small Class Sizes

## Developing the Whole Child



SPIRITUALLY



ACADEMICALLY



PHYSICALLY



SOCIALLY

[www.SantaFeChristian.org](http://www.SantaFeChristian.org) | [info@SantaFeChristian.org](mailto:info@SantaFeChristian.org)

## JOURNEY MONTESSORI SCHOOL

The Journey Montessori School's mission is founded on authentic, Montessori methodology combined with a deep connection to nature and outdoor education. Journey's vision is to foster learning through developmentally appropriate experiences that tie together core academic subjects with natural-world experiences. Students explore concepts of constructing themselves while developing their social/emotional/cognitive intelligence and communication. They participate in inquiry-based learning projects that foster initiative and allow for voice and choice. Students move beyond the classroom walls to connect with nature and their community. Students are prepared to face planet challenges, all within the context of where they are developmentally.

505-652-1986

[journeymontessorischool.org](http://journeymontessorischool.org)

- PRE-KINDERGARTEN ● KINDERGARTEN
- ELEMENTARY SCHOOL ● MIDDLE SCHOOL

## KIDS' CHOICE INC.

Kids' Choice Inc. is a nonprofit preschool that has been serving the community in and around Santa Fe since 1997. It offers quality care to children 2 through 5 years of age with a mission to establish a safe, healthy, and nurturing learning environment for young children and their families. Understanding the importance of play, the Kids' Choice Inc. recognizes that children work hard at what they do and play is learning for a child.

505-992-6146

- EARLY CHILDHOOD ● PRE-KINDERGARTEN

## LA CASITA PRESCHOOL

La Casita Preschool is a Reggio Emilia-Inspired, parent cooperative school that has served the families of Santa Fe for 52 years. La Casita is 5-star rated through the Early Childhood Education and Care Department and nationally accredited through the National Association for the Education of Young Children. They offer a wide variety of play experiences, expressive materials, and learning experiences not available at home. Children are free to choose, observe, explore, create, and learn in a literacy rich environment especially designed for them.

505-983-2803 | [lacasita.edu](http://lacasita.edu)

- EARLY CHILDHOOD ● PRE-KINDERGARTEN
- KINDERGARTEN

## LA MARIPOSA MONTESSORI

The La Mariposa Montessori is a traditional Montessori school with certified Montessori instructors and traditional Montessori materials presented in the classrooms. Work groups are small, with children making independent, responsible decisions about their workflow and individual progress. The key programming element is the prepared environment, which encourages a child to be self-directed and develop active learning skills. The staff is committed to providing children with a well-rounded, developmentally appropriate academic program in a nurturing, well-prepared, respectful, and diverse environment. La Mariposa Montessori believes education is a life-long endeavor and that every child has a right to grow, learn, and



# 2024 SCHOOL GUIDE

develop in a child-centered and well-prepared environment.  
505-995-9659

[lamariposamontessori.com](http://lamariposamontessori.com)

- EARLY CHILDHOOD
- PRE-KINDERGARTEN
- KINDERGARTEN
- ELEMENTARY SCHOOL

## LA PETITE ACADEMY

For more information, visit the school's website.

505-473-9525 | [lapetite.com](http://lapetite.com)

- EARLY CHILDHOOD
- PRE-KINDERGARTEN

## LITTLE EARTH SCHOOL

For more information, visit the school's website.

505-988-1968 | [littleearthschool.org](http://littleearthschool.org)

- PRE-KINDERGARTEN
- KINDERGARTEN
- ELEMENTARY SCHOOL

## MAY CENTER FOR LEARNING

The May Center for Learning (May School) serves exceptional students from early childhood through 8th grade. It specializes in teaching students with learning differences such as dyslexia, ADHD, and language processing disorder. May School's student-to-teacher ratio is 6 to 1. Each student's program is individualized to meet the student's specific needs and is taught by faculty who have completed extensive training in Multisensory Structured Literacy™ teaching, which is the gold standard for students with learning differences.

505-780-5439 | [www.maycenter.org](http://www.maycenter.org)

- EARLY CHILDHOOD
- PRE-KINDERGARTEN
- KINDERGARTEN
- ELEMENTARY SCHOOL
- MIDDLE SCHOOL

## RIO GRANDE SCHOOL

Founded in 1978, RGS is a preschool through 6th-grade private interdisciplinary school that takes a collaborative whole-child approach to education. Known for its academic rigor, hands-on learning and robust co-curriculars, RGS sets the bar high with a mission to challenge each child's intellect, to inspire each child's imagination, and to nurture each child's desire to learn.

505-983-1621 | [riograndeschool.org](http://riograndeschool.org)

- EARLY CHILDHOOD
- PRE-KINDERGARTEN
- KINDERGARTEN
- ELEMENTARY SCHOOL

## SANTA FE CHRISTIAN

Santa Fe Christian is a private school serving K-6th grade. Our mission is to serve Christian families by providing a Gospel centered, academically superior, and expanding educational experience. Our mission is to raise up Christlike leaders who will realize and pursue their full potential to transform the world for the glory of God. Our expectations are to develop the whole child, spiritually, academically, socially, and physically through the truths of the gospel.

505-477-4460 | [santafechristian.org](http://santafechristian.org)

- ELEMENTARY SCHOOL

## SANTA FE GIRLS' SCHOOL

Dedicated to middle school girls, the Santa Fe Girls' School cultivates discerning minds, strong voices, and emotional wisdom through substantive academics and authentic student-teacher connections. The thoughtful academic curricula engages students' curiosity and excellence; their small class size ensures that each student's abilities, challenges and accomplishments are recognized by their teachers. Graduates go on to the public and private high schools of their choice as academic and social leaders.

505-820-3188 | [santafegirlsschool.org](http://santafegirlsschool.org)

- MIDDLE SCHOOL

## SANTA FE INDIAN SCHOOL

For more information, visit the school's website.

505-989-6300 | [sfis.k12.nm.us](http://sfis.k12.nm.us)

- MIDDLE SCHOOL
- HIGH SCHOOL

## SANTA FE MONTESSORI CHILD CARE PROGRAM

For more information, visit the school's website.

505-629-6443

[santafemontessorichildcareprogram.com](http://santafemontessorichildcareprogram.com)

- EARLY CHILDHOOD
- PRE-KINDERGARTEN
- KINDERGARTEN
- ELEMENTARY SCHOOL

## SANTA FE PREP

Santa Fe Prep (Prep) offers engaging academic courses and meaningful experiential education programs to students in 7th through 12th grades. Students learn how to solve problems big and small, explore the natural world, use technology in creative ways, and bring their ideas to life. Vibrant visual and performing arts programs, competitive athletic opportunities, and service learning are integral to a Prep education. Prep is now accepting applications for the 2024-2025 school year, and generous tuition assistance is available. The Malone Family Foundation Scholarship supports gifted students with demonstrated financial need.

505-982-1829 | [sfprep.org](http://sfprep.org)

- MIDDLE SCHOOL
- HIGH SCHOOL

## SANTA FE SCHOOL FOR ARTS AND SCIENCES

The Santa Fe School for Arts and Sciences is a small, private school with 140 students from preschool through eighth grade. The school boasts a five-acre campus that affords students the opportunity to learn both inside and outside of the classroom. The school's commitment to meaningful learning encourages students to think critically and work collaboratively as the individual qualities and strengths of each student are nurtured. It connects high-quality academic learning to adventure and character development by using a hands-on, project-based approach that integrates the arts and sciences.

505-438-8585 | [santafeschool.org](http://santafeschool.org)

- EARLY CHILDHOOD
- PRE-KINDERGARTEN
- KINDERGARTEN
- ELEMENTARY SCHOOL
- MIDDLE SCHOOL

## SANTO NIÑO REGIONAL CATHOLIC SCHOOL

The Santo Niño Regional Catholic School (Santo Niño) is built on community.

Teachers, parents, and students work in concert to provide the most well-rounded and wholesome educational environment possible. Students not only learn to count, read, and play musical instruments, but also how to be a good citizen, a good son or daughter, and a charitable person. Santo Niño has a diverse and thoughtful community of teachers who work together in harmony and joy to define the most challenging and intriguing curriculums. Teachers also provide friendship, safety, and a loving environment for the children in their classrooms.

505-424-1766 | [santoninoregional.org](http://santoninoregional.org)

- PRE-KINDERGARTEN
- KINDERGARTEN
- ELEMENTARY SCHOOL

## ST. MICHAEL'S HIGH SCHOOL - NO CTC INFO

For more information, visit the school's website.

505-983-7353 | [stmichaelsf.org](http://stmichaelsf.org)

- HIGH SCHOOL

## TEMPLE BETH SHALOM PRESCHOOL

Temple Beth Shalom Preschool students benefit from small class sizes and the warmth of professional & dedicated educators. The outdoor space is an extension of the classroom where learning continues in two

playgrounds and a student-tended garden. Intentional materials encourage creativity, exploration, and discovery.

505-982-6888 | [sftbs.org/preschool](http://sftbs.org/preschool)

- EARLY CHILDHOOD
- PRE-KINDERGARTEN

## THE HOMESCHOOL CLASSROOM

In 13 years, since its founding, The Homeschool Classroom has played a major role in the transformation of Santa Fe Homeschooling. Families seeking assistance of how to provide a stimulating and encouraging elementary education program for their child have used our program to maintain consistent social-emotional and academic growth for their child. The Homeschool Classroom uses multiple combined curriculums to provide individualized education plans for each attending student with attention to each child's particular learning style. Direct lessons in Math and Language Arts are supplemented with Science and Social Studies themes and integrated learning activities such as Martial Arts, Music and Visual and Performing Arts.

505-919-9117

[thehomeschoolclassroomsantafe.com](http://thehomeschoolclassroomsantafe.com)

- PRE-KINDERGARTEN
- KINDERGARTEN
- ELEMENTARY SCHOOL
- MIDDLE SCHOOL



Raya, age 7, with her indigo tea towel. Photo courtesy of Dragonfly Art Studio.



# PUBLIC SCHOOLS

## ACEQUIA MADRE ELEMENTARY SCHOOL

Acequia Madre embraces joyful learning by helping students discover and build upon their passions. Through challenging academics, fine and performing arts, and community partnerships, students learn to contribute to their community and develop the skills needed to become lifelong learners and conscientiously engaged citizens for the future. In 2023-2024 over 70% of our students are transfers from all over the city. Acequia Madre boasts a unique 2-4 grade violin program, a K-6 garden program, a strongly engaged parent-teacher community, and proudly sports the Blue Ribbon designation for outstanding academic achievement.

505-903-8896 | [acequiamadre.sfps.info](http://acequiamadre.sfps.info)

● KINDERGARTEN ● ELEMENTARY SCHOOL

## AMY BIEHL COMMUNITY SCHOOL

At the Amy Biehl Community School, teachers and students are held to high expectations and engage in a rigorous education. Teachers work to encourage a child's sense of wonder and natural desire to learn in a culture that celebrates students' voices and their ability to explore, design, and collaborate. Amy Biehl serves students of the Rancho Viejo, La Cienega, Cerrillos, and

Madrid communities. Amy Biehl is a true Community School that provides services and supports that fits our community's needs. A Community school focuses on what students in the community truly need to succeed. 505-467-2100 | [amybiehl.sfps.info](http://amybiehl.sfps.info)

● PRE-KINDERGARTEN ● KINDERGARTEN  
● ELEMENTARY SCHOOL

## ASPEN COMMUNITY SCHOOL

An Aspen education is defined by connectedness, community learning, and immersing students in real-world projects. This approach supports students in becoming scholars, explorers, collaborators, and innovators. Aspen values the community as a critical part of children's education, a place to learn empathy, to seek common ground, to lead toward a vision of community good, and to make a difference. Aspen's students see themselves as scholars who are interdependent with each other, their community, and the natural world.

505-467-4500 | [aspen.sfps.info](http://aspen.sfps.info)

● PRE-KINDERGARTEN ● KINDERGARTEN  
● ELEMENTARY SCHOOL ● MIDDLE SCHOOL

## ATALAYA ELEMENTARY SCHOOL

Atalaya Elementary School is a mid-sized school known for its small, family-friendly feel. Nestled in the foothills of the East Mountains, their team of teachers provides a strong academic foundation that seeks to instill the love of learning in every student. They believe in educating the whole child and offer a balanced curriculum of math, language

arts, inquiry science and social studies. Each classroom experience includes various grade-level traditions that are designed with a variety of community partners such as DoD STARBASE, National Dance Institute, Wise Fools, New Mexico Center for Therapeutic Riding and the Acequias Project. These unique traditions help students experience excellence and a belief in and understanding of themselves through the programs partnerships they experience.

505-467-4400 | [atalaya.sfps.info](http://atalaya.sfps.info)

● PRE-KINDERGARTEN ● KINDERGARTEN  
● ELEMENTARY SCHOOL

## CAPITAL HIGH SCHOOL

The Capital High School is a ninth through 12th grade comprehensive high school with specialized programming including AVID®, bilingual courses, advanced placement, dual credit offerings, and Medical Pathway, Business Pathway, and Computer Science Pathway. Similarly, Capital High School has a variety of extracurricular athletics and activities.

505-467-1002 | [capital.sfps.info](http://capital.sfps.info)

● HIGH SCHOOL

## CARLOS GILBERT ELEMENTARY SCHOOL

Carlos Gilbert Elementary (CGE) is dedicated to the students and community. Generations of Santa Fe families have attended this school and we're honored to carry on the tradition. The school is within walking distance of the Downtown Santa Fe Plaza. This provides students with many

opportunities to experience arts and culture at performing arts venues and museums. Carlos Gilbert has incredible parent involvement through the Parents, Teachers, Kids (PTK) organization. The PTK funds several enrichment programs which are available to students. 505-467-4703 | [carlosgilbertptk.com](http://carlosgilbertptk.com)

● KINDERGARTEN ● ELEMENTARY SCHOOL

## CÉSAR CHÁVEZ ELEMENTARY SCHOOL

César Chávez Elementary School serves pre-k through 5th grades with a dual language program. The caring and professional staff offers evidence-based programs that support academic growth, success and social-emotional wellness for all. Programs include a comprehensive, standards-based literacy program focused on ensuring students are biliterate and bilingual by 5th grade. Science and social studies are organized around themes to create student interest while respecting and honoring each child's voice, personal life experience, beliefs, language and culture. Community partners such as MathAmigos and Los Alamos National Labs help to inspire students to love math and support active participation in scientific practices.

505-467-3200 | [cesarchavez.sfps.info](http://cesarchavez.sfps.info)

● PRE-KINDERGARTEN ● KINDERGARTEN  
● ELEMENTARY SCHOOL

## CHAPARRAL ELEMENTARY SCHOOL

Chaparral Elementary is truly a hidden gem! Chaparral is centrally located with easy access to I-25, Downtown and the



# APPLY NOW!

SANTA FE SCHOOL FOR THE  
**ARTS & SCIENCES**



PRESCHOOL TO 8TH GRADE  
AFTERSCHOOL ENRICHMENT  
OPEN TO AGES 11 & UP

Tours • Financial Aid

An Independent Expeditionary Learning School  
[santafeschool.org](http://santafeschool.org) | (505) 438-8585



# 2024 SCHOOL GUIDE

Southside. Chaparral has experienced and dedicated teachers as is fortunate to have the Nusenda teacher of the year as a member of their staff. Students have the opportunity to engage in Art Club, 21st Century, Girls on the Run, as well as other activities. Chaparral has many opportunities for families to be involved and engaged and is a school where everyone knows your name and where students are told they are loved and cared about every day.  
**505-467-1400 | chaparral.sfps.info**

KINDERGARTEN ELEMENTARY SCHOOL

## DESERT SAGE ACADEMY

Desert Sage Academy (DSA) is a cyber academy that serves all the students of the Santa Fe School District. DSA is a cyber-academy with a unique list of electives for students to choose from. All students are evaluated with the new SBG (Standards-Based Grading). DSA academic standards are aligned with “Imagine Learning” and their educational platform, “Edgenuity”. Imagine Learning and Edgenuity provides initial credit and credit recovery courses that provide flexibility to each student’s unique learning journey. Through its online educational platform, DSA is able to assist all students meet their educational goals and graduate with a high school diploma.  
**505-467-0310 | desertsage.sfps.info**

KINDERGARTEN ELEMENTARY SCHOOL  
MIDDLE SCHOOL HIGH SCHOOL

## EARLY COLLEGE OPPORTUNITIES HIGH SCHOOL

The Early College Opportunities High School (ECO) offers dual credit courses to transition students from high school to college for certificates and degrees that lead to high-quality careers. Postsecondary partners include Santa Fe Community College, Institute of American Indian Arts, and San Juan College.  
**505-467-2701 | eco.sfps.info**

HIGH SCHOOL

## EARLY LEARNING CENTER AT KAUNE

The Early Learning Center at Kaune (Kaune) is a warm and welcoming place for children from 3 to 5 years old. Educators start with a foundation built on relationships and social-emotional learning. The school supports children in developing the skills they need to work, play, and interact with other members of the community. Inspired by the Reggio Emilia Approach® to learning, educators create classroom environments that promote curiosity, exploration, and discovery — igniting a life-long love of learning. The school’s program received national accreditation through the National Association for the Education of Young Children, which ensures programs meet 10 standards of high-quality early childhood education.  
**505-982-2002 | growingupnm.org**

EARLY CHILDHOOD PRE-KINDERGARTEN



JF Mazur Studio courtesy photo.



Art School Santa Fe courtesy photo.

## EJ MARTINEZ ELEMENTARY SCHOOL

EJ Martinez Elementary is a smaller-sized neighborhood school that has been home to many students and families since 1959. They foster a true community feeling and work to welcome all families and students. EJ Martinez teaches pre-kindergarten through sixth grade and has a holistic view of education. They strive to educate in all content areas and give special attention to the social and emotional development of students. Extracurricular activities are available including girls basketball, boys basketball, cheerleading, STEAM club, student council and opportunities for academic tutoring. They have a large number of students who participate in its 21st Century After School Program giving great opportunities for learning and extracurricular activities.  
**505-467-3800 | ejmartinez.sfps.info**

PRE-KINDERGARTEN KINDERGARTEN  
ELEMENTARY SCHOOL

## EL CAMINO REAL ACADEMY

El Camino Real Academy is a Dual Language, multicultural, multi-literate community of respectful, kind, responsible, creative learners striving for excellence. El Camino Real Academy is committed to dual language education for all students in grade Pre-K through 8th, and is currently the only International Spanish Academy in

New Mexico. El Camino Real Academy students have the opportunity to be recognized by the Ministry of Education of Spain to receive the official Spanish Seal issued by the Spanish Embassy.

**505-467-1300 | ecra.sfps.info**

PRE-KINDERGARTEN KINDERGARTEN ELEMENTARY SCHOOL MIDDLE SCHOOL

## EL DORADO COMMUNITY SCHOOL

The El Dorado Community School (El Dorado) reflects a culture all its own. It is representative of the local and rural communities and teaches students kindergarten through eighth grade. El Dorado students are offered a variety of classes with an emphasis on art and music. By the end of eighth grade, all students will have experienced choir, band, or orchestra. The school community proudly maintains a community garden through the student garden club. Students have access to various after-school sports and clubs — most of which are sponsored by or provided through the support of local community members and organizations.

**505-467-4900 | eldorado.sfps.info**

KINDERGARTEN ELEMENTARY SCHOOL  
MIDDLE SCHOOL



**FRANCIS X. NAVA  
ELEMENTARY SCHOOL**  
Nestled in the middle of Santa Fe, the Francis X. Nava Elementary School (Nava) serves approximately 180 students. Nava proudly boasts one class per grade level, and students thrive on the “Nava Way” being respectful, responsible, and conscientious. Nava’s vision is to rise above goals and past expectations. Every educational decision the school makes is supported by its core values: making every moment a teachable one, supporting each other to meet challenges, and looking for the positive.  
**505-467-1200 | nava.sfps.info**  
● PRE-KINDERGARTEN ● KINDERGARTEN ● ELEMENTARY SCHOOL

**GONZALES COMMUNITY  
SCHOOL**  
The Gonzales Community School (Gonzales) is a wonderful community school that is nestled in the far northern end of the city. Gonzales offers a familial atmosphere that is focused on nurturing the whole child from kindergarten through eighth grade. Gonzales boasts robust STEAM, arts, and sports programs. The school specializes in building and fostering relationships with its students. The teachers and staff are dedicated to creating future collegians who represent the “Lobo Way” with an eye toward citizenship and community stewardship.  
**505-467-3100 | gonzales.sfps.info**  
● KINDERGARTEN ● ELEMENTARY SCHOOL ● MIDDLE SCHOOL

**KEARNY ELEMENTARY  
SCHOOL**  
For more information, visit the school’s website.  
**505-467-1800 | kearny.sfps.info**  
● PRE-KINDERGARTEN ● KINDERGARTEN ● ELEMENTARY SCHOOL

**KIDS CAMPUS AT SANTA  
FE COMMUNITY COLLEGE**  
For more information, visit the school’s website.  
**505-428-1354 | kidscampus.sfcc.edu**  
● EARLY CHILDHOOD

**MANDELA INTERNATIONAL  
MAGNET SCHOOL**  
Mandela International Magnet School (Mandela) is the only equal access, public International Baccalaureate (IB) school in Santa Fe. Picked as the 7th best public High School in New Mexico in 2023 by Niche.com, Mandela fully embraces the tenets and mission of the IB program to develop inquiring, knowledgeable, and caring young people who help to create a better and more peaceful world through intercultural understanding and respect. Admission is lottery based through Santa Fe Public Schools.  
**505-467-1901 | mims.sfps.info**  
● MIDDLE SCHOOL ● HIGH SCHOOL

**MILAGRO MIDDLE SCHOOL**  
For more information, visit the school’s website.  
**505-467-3300 | milagro.sfps.info**  
● MIDDLE SCHOOL

**NEW MEXICO  
CONNECTIONS ACADEMY**  
For more information, visit the school’s website.  
**505-428-2150 | connectionsacademy.com**  
● PRE-KINDERGARTEN ● KINDERGARTEN ● ELEMENTARY SCHOOL ● MIDDLE SCHOOL

**NEW MEXICO SCHOOL FOR  
THE DEAF**  
For more information, visit the school’s website.  
**505-476-6300 | nmsd.k12.nm.us**  
● PRE-KINDERGARTEN ● KINDERGARTEN ● ELEMENTARY SCHOOL ● MIDDLE SCHOOL ● HIGH SCHOOL

**NINA OTERO COMMUNITY  
SCHOOL**  
The Nina Otero Community School (Nina Otero) is focused on kindness and hard work, with older students teaching and supporting academic growth while being positive role models for their younger peers. Nina Otero shapes students into confident, capable, empathetic citizens who make positive, lasting impacts in the school, community, and world. Nina Otero offers many programs, including Early Readers, basketball, volleyball, track, football (partnering with Ortiz Middle School), Book Club, band, orchestra, choir, chess, Art Club, yearbook, Natural Helpers, Wellness Ambassadors to Voice and Empower (WAVE), science fair, and Scripps National Spelling Bee.  
**505-467-4201 | ninaotero.sfps.info**  
● PRE-KINDERGARTEN ● KINDERGARTEN ● ELEMENTARY SCHOOL ● MIDDLE SCHOOL

**NYE EARLY CHILDHOOD  
CENTER**  
The Nye Early Childhood Center (Nye) is a high-quality early childhood learning center that welcomes and supports all learners. Teachers are highly qualified in early childhood education and special education. Nye is equipped with several collaborative learning spaces that support inquiry-based learning, art, independence, and family engagement. The school values family partnerships and community involvement. All students are guaranteed equitable opportunities through the Santa Fe Public Schools pre-kindergarten lottery.  
**505-467-4600 | nye.sfps.info**  
● EARLY CHILDHOOD ● PRE-KINDERGARTEN

**ORTIZ MIDDLE SCHOOL**  
Ortiz Middle School is a caring, creative, intelligent community of lifelong learners with high expectations. The school makes bilingual education part of everything that it does. Ortiz is aligned with three elementary feeder schools in creating a Dual Language model. Ortiz is unique in offering the Junior Biomedical Sciences Career Exploration Program. Ortiz is providing a pipeline to college through AVID. Ortiz offers a wide variety of school activities, including Ortiz Academic League After School Program, Student Council, Sports Teams, Chess Club, Theater Club, Monthly Bike to School Day, Wave, Girls Inc, and Natural Helpers.  
**505-467-2300 | ortiz.sfps.info**  
● MIDDLE SCHOOL



**SANTA FE  
Girls’ School**  
Dedicated to Middle School Girls

**Admissions  
Open House  
March 10<sup>th</sup>  
3 PM**

RSVP:  
[www.santafegirlsschool.org](http://www.santafegirlsschool.org)

**4th & 5th grade  
families welcome!**

310 West Zia Road • 505.820.3188  
*Financial aid available*



Arjun, age 10, with his beautiful watercolor bird painting. Photo courtesy of Dragonfly Art Studio.



# 2024 SCHOOL GUIDE

## PIÑON ELEMENTARY SCHOOL

Piñon Elementary School’s diverse student population affords everyone a culturally sensitive and enriched atmosphere. The Piñon school motto, “All Things are Possible When We Work Together Toward a Common Goal,” represents the community’s commitment to the school and all children in Santa Fe. Piñon was named a 2020 prestigious Blue Ribbon School by the U.S. Department of Education, affirming the hard work of students, educators, families and the community in creating a safe and welcoming school where students master challenging content.

505-467-1600 | [pinon.sfps.info](http://pinon.sfps.info)

- PRE-KINDERGARTEN ● KINDERGARTEN
- ELEMENTARY SCHOOL

## R.M. SWEENEY ELEMENTARY SCHOOL

The R.M. Sweeney Elementary School Community commits itself to providing quality education to its children by encouraging individual growth and development of ALL students. Special considerations are given to social-emotional and physical development, bilingual education proficiency, and to the special interests and talents of each student. The school community

will meet the needs of ALL students by providing a variety of programs focusing on Literacy, STEAM, and Wellness. We strive to create and maintain a school climate that fosters, “I better myself, I better the world!”

505-467-1500 | [sweeney.sfps.info](http://sweeney.sfps.info)

- PRE-KINDERGARTEN ● KINDERGARTEN
- ELEMENTARY SCHOOL

## RAMIREZ THOMAS ELEMENTARY SCHOOL

The Ramirez Thomas Elementary School’s mission is to provide students with targeted academic and social-emotional learning opportunities that value and build on what they already know. Teachers and staff members value the partnerships between students, families, and the community.

505-467-3000 | [ramirezthomas.sfps.info](http://ramirezthomas.sfps.info)

- EARLY CHILDHOOD ● PRE-KINDERGARTEN
- KINDERGARTEN ● ELEMENTARY SCHOOL

## SALAZAR ELEMENTARY SCHOOL

Salazar’s vision is to foster an environment where students know they belong and that they are loved! They are committed learners who deeply value learning through challenging academics while cultivating a worldly curiosity. Whether learning inside or outside in the beautiful garden,



JF Mazur Studio courtesy photo.

students are encouraged to explore and share ideas. Engagement extends to families and community. Through joyful celebrations, outdoor learning, and STEM opportunities, Salazar secures students’ paths towards a thriving future. They offer the opportunity to learn in both English and Spanish no matter your home language! They are dedicated to helping students find the positive strengths that they have within themselves to shine bright in the community.

505-467-3900 | [salazar.sfps.info](http://salazar.sfps.info)

- PRE-KINDERGARTEN ● KINDERGARTEN
- ELEMENTARY SCHOOL

## SANTA FE HIGH SCHOOL

Santa Fe High School seeks to develop life-long learning skills, values and knowledge so that students can become self-reliant, positive contributors to our democratic society and the world. Santa Fe High School offers a diverse curriculum, a wide range of Advanced Placement (AP) courses and dual credit offerings, elective opportunities and unique small learning academies that develop strong teacher-student relationships.

505-467-2400 | [sfhs.sfps.info](http://sfhs.sfps.info)

- HIGH SCHOOL

## TESUQUE ELEMENTARY SCHOOL

Tesuque Elementary School (Tesuque) is a hidden gem located north of Santa Fe in the Tesuque Village. Tesuque has served the children of Tesuque, Chupadero, Rio en Medio, and Tesuque Pueblo since 1930. With an approach focused on multi-sensory learning beyond the classroom, Tesuque offers an academic program that meets the needs of all learners. Embedded throughout

the school day is a sensory, social, and emotional curriculum. Tesuque’s diverse students have daily opportunities to learn about a variety of cultures, explore the attributes of living in New Mexico, and make use of their ideas for the betterment of the world.

505-467-4102 | [tesuque.sfps.info](http://tesuque.sfps.info)

- KINDERGARTEN ● ELEMENTARY SCHOOL

## WOOD GORMLEY ELEMENTARY SCHOOL

Wood Gormley Elementary School provides every student with a high-quality education and multiple opportunities to meet or exceed challenging grade-level math and reading standards. In a safe, caring, and inclusive environment, the school prepares students for the next grade, college, and careers. Wood Gormley, a National Blue Ribbon School, strives to meet students where they are and to capitalize on their strengths to enhance their learning experiences. Wood Gormley offers a wide variety of after-school activities, including tutoring, yoga, technology club, outdoor club, chess club, lego club, art club, First Serve Tennis, basketball, cheer, lacrosse club, swim team and more.

505-467-4800 | [woodgormley.sfps.info](http://woodgormley.sfps.info)

- KINDERGARTEN ● ELEMENTARY SCHOOL



Artwork by Aiya. Art School Santa Fe courtesy photo.



# ACADEMIC SUPPORT

## A+ ACADEMIC COACHING

For more information, visit the website.  
505-888-7643 | [apluscoaching.com](http://apluscoaching.com)

● PRIVATE TUTORING

## ARISE TUTORS

Arise Tutors provides one-on-one and small group tutoring throughout Northern NM including schools, in the community, at Pueblos, and in the home. We are qualified to interpret standardized test scores to enhance achievement. We have a tutor base for Spanish and emerging English learners. We also have expertise in STEM tutoring. Each tutoring relationship begins with an assessment and follow-up conversation with families/guardians. We offer group and package discounts and flexible scheduling.

(315) 552-8205 | [arisetutors.com](http://arisetutors.com)

● READING, WRITING, MATH/STEM, PRIVATE TUTORING, ONLINE

## BREAKTHROUGH SANTA FE

For more information, visit the website.  
505-795-7517 | [breakthroughsantafe.org](http://breakthroughsantafe.org)

● PRIVATE TUTORING

## C14 LEARNING SERVICES

For more information, visit the website.  
704-737-4649 | [catherinefortin.org](http://catherinefortin.org)

● PRIVATE TUTORING, WRITING

## CATRON COMMUNITY LEARNING CENTER

For more information, visit the website.  
505-983-8102

[catroncommunitylearning.com](http://catroncommunitylearning.com)

● PRIVATE TUTORING

## ETIQUETTE SCHOOL OF SANTA FE

For more information, visit the website.  
505-988-2070 | [etiquettesantafe.com](http://etiquettesantafe.com)

● PERSONAL ENRICHMENT

## FIRST SERVE OF NEW MEXICO

For more information, visit the website.  
505-395-6482 | [firstservenewmexico.org](http://firstservenewmexico.org)

● PERSONAL ENRICHMENT,

PRIVATE TUTORING

## LEARNERS CHESS

Learners Chess is a local New Mexico nonprofit founded in 2010. We use chess as a tool to develop intellectual, social, and leadership maturity for success in school and in life. We run school chess clubs, school break chess camps, and chess tournaments for kids.

505-369-6026 | [learnerschess.org](http://learnerschess.org)

● PERSONAL ENRICHMENT, CHESS

## LITERACY VOLUNTEERS OF SANTA FE

For more information, visit the website.  
505-428-1353 | [lvsf.org](http://lvsf.org)

● READING, PRIVATE TUTORING

## MATHNASIUM OF SANTA FE

For more information, visit the website.  
505-657-2606

[mathnasium.com/santafe/about](http://mathnasium.com/santafe/about)

● MATH/STEM, PRIVATE TUTORING

## MAY CENTER FOR LEARNING

For more information, visit the website.  
505-983-7407 | [maycenter.org](http://maycenter.org)

● READING, PERSONAL ENRICHMENT, PRIVATE TUTORING

## READING QUEST

For more information, visit the website.  
505-920-9709 | [readingquestcenter.org](http://readingquestcenter.org)

● READING, PERSONAL ENRICHMENT, PRIVATE TUTORING

## SANTA FE CHILDREN'S MUSEUM

Weekly programs are all included with museum admission and designed to offer science, technology, engineering, arts, and math (STEAM) activities that build upon a child's natural sense of joy and discovery. We encourage and cultivate habits of inquiry about the world, how things work, and promote plenty of fun.

Wednesdays at 10:30 AM: Wee

Wednesdays toddler play

Thursdays at 10:30 AM: Seeds and

Sprouts nature-based fun

Fridays from 2-4 PM: Fine Art Fridays

art exploration

Saturdays from 2-4 PM: Science

Saturdays STEM projects

505-989-8359

[santafechildrensmuseum.org](http://santafechildrensmuseum.org)

● PERSONAL ENRICHMENT, STEAM

## SANTA FE PUBLIC LIBRARY

For more information, visit the website.  
505-955-6781 | [santafelibrary.org](http://santafelibrary.org)

● READING, PERSONAL ENRICHMENT

## SFPS WORK-BASED LEARNING

The SFPS Work-Based Learning (WBL) program is a structured internship program that collaboratively engages local high-value employers and SFPS high schools offering junior and senior students quality PAID internships, job-shadowing and mentorship experiences. Participating high schools: Santa Fe High School, Capital High School, Early College Opportunities High School, Desert Sage Academy. Student Intern Benefits: Participation in a "boot camp"-style soft skills training pre-internship. They learn about professionalism, work ethic, effective communication, teamwork and problem-solving. They build a résumé, learn about email etiquette and practice interviewing skills while earning academic credit.

505-467-2647

[sfps.info/page/work-based-learning](http://sfps.info/page/work-based-learning)

● COLLEGE PREP ● HIGH SCHOOL

## THE PLANETARIUM AT SANTA FE COMMUNITY SCHOOL

For more information, visit the website.  
505-428-1000 | [sfcc.edu/planetarium](http://sfcc.edu/planetarium)

● PERSONAL ENRICHMENT

## VISTA GRANDE PUBLIC LIBRARY

For more information, visit the website.  
505-466-7323 | [vglibrary.org](http://vglibrary.org)

● READING, PERSONAL ENRICHMENT



**ENROLL NOW**  
K-8th Grade

A School as Vibrant as Our Community

**THRIVE** is a new tuition-free school for Santa Fe families. We prepare students to see the world through multiple lenses and create the conditions that allow our students to THRIVE.

To learn how we can help your child THRIVE visit [thriveschoolsf.org](http://thriveschoolsf.org) or call (505) 982-1990



Show Love



Be Brave



Work as a Team



Create Joy

**THRIVE**  
Community School

# Turquoise Trail Charter School

LEARN MORE ABOUT SANTA FE'S FAVORITE BILINGUAL, PROJECT BASED, ARTS INTEGRATION AND STEAM SCHOOL.



**SCHEDULE A CAMPUS TOUR**

**Lottery Opens January 8th 2024**

**Serving Students 3Y Pre-K-8**



Call To Find Out More  
**(505) 986-4000**



**TTSCHOOL.ORG**



# Book Nook

An excerpt from *Short Front Legs: Observations of the Human Species from a Tired Mother.*

Celebrating holidays brings out the most bizarre behavior of even the most level-headed humans.

**BRENDA FLEMING**



*Returning from Christmas tree hunt.*

*An excerpt from “Short Front Legs: Observations of the Human Species from a Tired Mother.”*

## Holidays

Celebrating holidays brings out the most bizarre behavior of even the most level-headed humans. I understand many holidays are rooted in religion or culture, and families want to honor their roots and beliefs.

But, over the years, human holidays have gone from celebrating a harvest

or a special story, and have evolved to some pretty odd activities that we label as “tradition.”

Six-foot-tall bunnies breaking into our houses, imagery of a bloody execution, and painting chicken eggs? Kid, that odd combination is just how we celebrate Easter!

Accepting treats from strangers and using knives to carve faces into squashes—honey, that’s just Halloween!

And, what’s weird about setting off explosives five hundred feet in the air to celebrate our country’s independence?

I redacted the part of this book that talks too much about Christmas because, again, I conform to society and I refuse to publicly admit or deny anything about Santa’s existence. But that doesn’t mean I can’t recognize the weird combination of the epitome of holidays: a tree in the house, a baby born outside, flying reindeer, presents in socks, wrapping our houses in tiny electrical lights, and your own mother insisting you sit on the lap of a stranger? Hell yeah! That’s what Christmas is all about!

How are we supposed to teach our children to make good choices on their own when—under the guise of “holiday”—we make exceptions to absurd behaviors that contradict everyday living?

Let’s talk about Thanksgiving, shall we? We celebrate how grateful we are by indulging in an eight thousand calorie dinner, and then, we top it off with four pieces of pie.\*

\*Note from the editors’ desk: And if you’re truly paralyzed by how much you ate, you sit and watch men in tights butt their heads together and throw each other on the ground.



*Claiming a pumpkin to carve.*



This past Thanksgiving, we decided to go “easy” on ourselves, and make dinner for just the five of us.

“Why don’t we just keep it simple, and do the essentials?” I asked my husband when discussing our menu. “Turkey, sweet potatoes, mashed potatoes. And pumpkin pie. And jello, of course—it’s tradition.”

“Sure! But we also need stuffing. And rolls. And gravy, and green beans! And pecan pie.” I nodded my head in agreement.



Eating turkey for Thanksgiving dinner.

“Oh, and cranberry sauce!” As the list got longer, I tried to think where we could possibly find room for negotiation: “Maybe instead of a full turkey, we do a cornichon.”

“A cornish hen? A cornichon is a small pickle,” my husband replied.

And with that, we decided a full turkey was also, without a doubt, a necessity.

I helped the kids make pie early in the week, but on the actual Thanksgiving day, my only task in the kitchen was to open the can of cranberry sauce—which I promptly delegated to my middle child.

I am not sure what happened to my time that day—maybe it was the 21 people who “just stopped by” or the neurotic cleaning—but somehow I was frantically busy until my husband took the last dish out of the oven.

Regardless, I found myself apologizing for lack of participation in the actual cooking.

“Mom, if you hadn’t opened the can of cranberry we could have all gone rogue and eaten each other.” My middle child is so great at making people feel better.

Thanks, dear, for saying that, but also for being the one who actually opened the can of cranberry sauce.

But I one-hundred percent agree: when it comes to what’s on the Thanksgiving table, not having cranberry sauce could have resulted in cannibalistic chaos—this surely has to be the explanation for our insistence on creating absolutely perfect holidays.

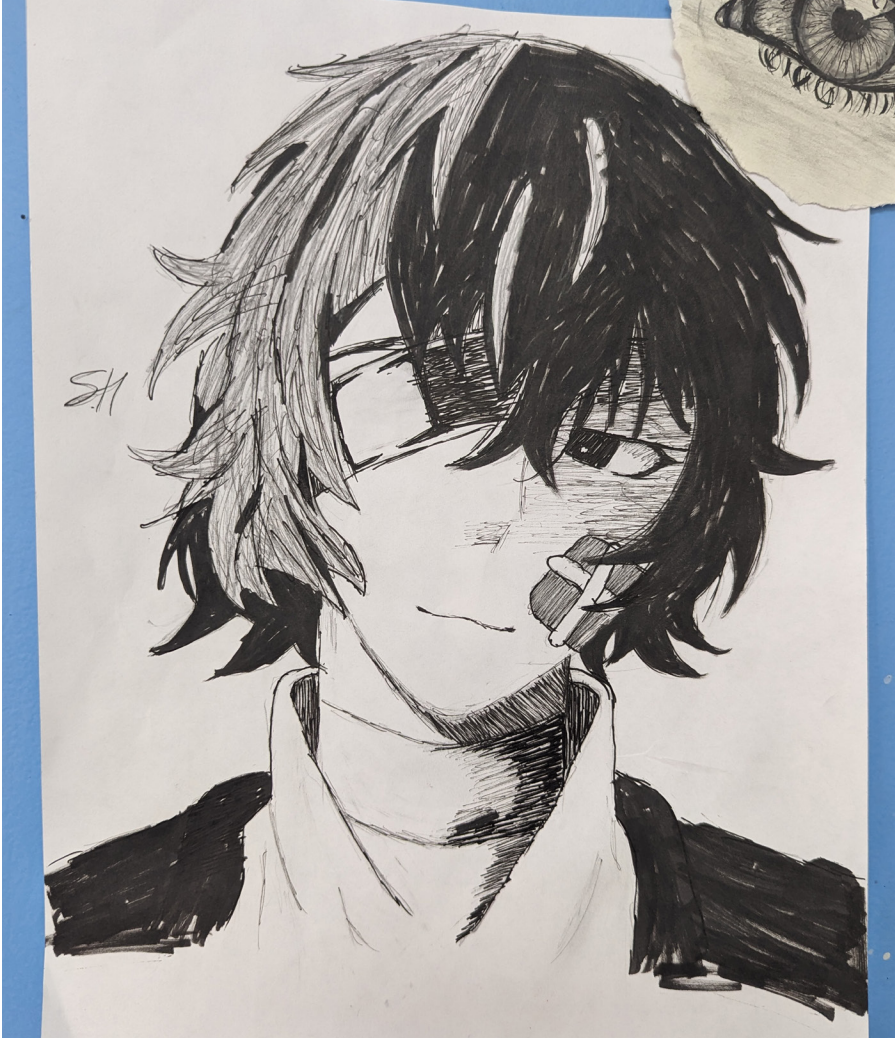
Or, maybe what we eat and how clean our house doesn’t matter.

Maybe gratitude would be better celebrated by splitting a small pickle five ways.

*Brenda is the mother of three kids, and loves all things New Mexico—from hiking, mountain biking, snowboarding and camping. Brenda Fleming sells New-Mexico themed T-shirts and wildlife/landscape stickers, and is the illustrator of the popular children’s book, Goodnight, Los Alamos that won Best Picture Book from the Arizona and New Mexico book awards.*



An illustration from Short Front Legs: Observations of the Human Species from a Tired Mother.



Artwork by S.H. Photo courtesy of Art School Santa Fe



**GENTLE SHEPHERD**  
  
**PRESCHOOL**

**PRE-KINDERGARTEN**  
**PROGRAM**  
(AGES 3-5)

**NURTURING ENVIRONMENT** 

 **LITERACY, MUSIC, ART**

**CHRISTIAN EMPHASIS** 

**REGISTER TODAY 505-577-5344**

209 E BARCELONA RD | SANTA FE, NM 87505



## New Mexico HOLIDAY TRADITIONS

As snow accumulates on our mountain peaks and the days grow ever shorter, we're reminded that the holiday season is just around the corner. While so many of us have traditions that help us mark the season and make it feel bright, these traditions vary from community to community and family to family. New Mexico is a massive state, and the range of holiday traditions celebrated here is broader still.

At the New Mexico Department of Cultural Affairs, we strive to honor our state's rich cultural tapestry with a broad range of holiday events and practices through its New Mexico Traditions series. Over the past several years, New Mexico Traditions has grown to encompass holiday events at each of the department's 15 museums and Historic Sites, and runs from Halloween through Valentine's Day. Some events are tied to Christmas, with traditional farolitos, holiday markets, and visits from Santa Claus. But others celebrate Lunar New Year, Día de Muertos, Veterans Day, and the countless Tribal traditions that have been celebrated for generations in the land we call New Mexico. As we move into the holiday season, here are just a few of the family-friendly festivities our team has planned for the winter months. (Visit [nmculture.org/traditions](https://nmculture.org/traditions) for detailed information on all the Department's events.)

In Santa Fe, our museums on the Plaza and Museum Hill have a slate of holiday events coming up. On Sunday, December 10, head to the New Mexico History Museum for Las Posadas, a creative retelling of Mary and Joseph's search for a place of shelter in the days leading up to the birth of Jesus. *Posada*, which means "inn" or "lodging," is a Christmas tradition in Mexico, the southwestern United States, and many Latin American countries. Las Posadas itself has been celebrated in a number of forms since the late 1500s. Now in its 47th year at the New Mexico History Museum, staff and community volunteers celebrate and retell Mary and Joseph's journey from Nazareth to Bethlehem with a candlelit procession that begins on the Santa Fe Plaza and concludes with carols and good cheer.

On Friday, December 15, head up to Museum Hill for the annual Winter Glow Holiday Stroll. This year, stops include a pair of beloved Santa Fe institutions: the Museum of International Folk Art and the Museum of Indian Arts and Culture. Stop by for snacks, family-friendly activities, and much more.

Back on the Plaza, the New Mexico History Museum and the New Mexico Museum of Art will host a Holiday Open House on Saturday, December 16. Explore the galleries and create holiday crafts at our Plaza location and the New Mexico Museum of Art Vadem Contemporary in the Railyard.

Enjoy outstanding performances by some of Santa Fe's most talented young musicians with the Santa Fe Youth Symphony Association. Drop into the museum's library to view some seasonally themed items from our archival collections during an open house. Librarian Abby Smith will be on hand to showcase holiday cards from the Will Schuster archive and the Baumann collection, as well as answer all your questions about the museum library and archives.

The New Mexico History Museum is also pleased to revive an old favorite exhibition, *Art from the Heart*, which features Christmas-themed letters, carvings, and woodblock prints by artist and printmaker Gustave Baumann. For more than five decades, beginning in 1918, Baumann created unique holiday greeting cards for his friends in Santa Fe's art community. One part idle drawing and one part polished artwork, these creations showcase the lighter side



Lights of Los Luceros. Courtesy of the New Mexico Department of Cultural Affairs.





*Noche de las Luminarias. Courtesy of the New Mexico Department of Cultural Affairs.*

of the internationally renowned Santa Fe artist's work.

Looking for something to do for the holidays outside Santa Fe? Try a candlelit nighttime stroll through some of Northern New Mexico's scenic landmarks, courtesy of New Mexico Historic Sites. Of course, whether you say farolitos or luminarias when referring to the iconic candlelit paper bags lining roads and trails during the holidays comes down to what part of our state you call home. In an argument that dates back more than four centuries, northern New Mexicans tend to use farolito, derived from farol, the Spanish word for "lantern." Meanwhile, our neighbors to the south have stuck with calling the distinctive decorations luminarias, based on the Spanish word for light.

Whatever you call them, these lights will line the trails and help spread holiday cheer during events at Northern New Mexico's historic sites throughout December. Beginning a new tradition on Saturday, December 2, Bosque Redondo Memorial at Fort Sumner Historic Site welcomes visitors for its Winter Letters Farolito Tour, a night of beauty and reflection. On December 8 and 9, Jemez Historic Site's Lights of Gisewa event will bring lines of farolitos to the village's footprint. Formerly titled Light Among the Ruins, this event also includes an arts and crafts fair as well as food vendors. The following weekend, head to Los Luceros Historic Site for Lights of Los Luceros on Saturday, December 16. This annual event features arts and crafts, food and drink options from local vendors, winter night-sky observation, and, of course,

plenty of farolitos, luminarias, and Christmas lights.

In Albuquerque, the holiday season kicks off with the Old Town Holiday Stroll from 5 to 9 p.m. on Friday, December 1. This annual event brings holiday cheer to the historic heart of New Mexico's largest city, with hot chocolate, live performers, and a tree-lighting ceremony on the Plaza Don Luis. During the stroll, stop by the New Mexico Museum of Natural History and Science for food and beverages, a visit from Santa, and much more.

The following weekend, head down to the National Hispanic Cultural Center's winter Día de Familia on Friday, December 8 for a full slate of free family-friendly seasonal activities. Sip on hot cocoa and nibble biscochitos while enjoying winter crafts, and stick around for a screening of Disney's *Encanto*.

Across New Mexico, our traditions allow us to mark the moments that matter most to us and pass on elements of our culture to the next generation. On behalf of the New Mexico Department of Cultural Affairs, we invite you to share in our traditions and celebrate the holiday season with us.

*Stephen Hamway is a Public Relations Specialist for the New Mexico Department of Cultural Affairs, representing the National Hispanic Cultural Center, the New Mexico Museum of Natural History and Science, and the Historic Preservation Division.*

**MEOW WOLF**  
**SANTA FE**

**MONDAY FUNDAY**

**HALF OFF ADMISSION FOR NEW MEXICANS**  
**MONDAYS AFTER 3PM WITH CODE**  
**MONDAYFUNDAY**

**Visit our community room Rainbow Rainbow!**  
**New classes for kids and adults added regularly.**

**Learn more at [santafe.meowwolf.com](https://santafe.meowwolf.com)**  
**1352 Rufina Cir, Santa Fe**





*Carie Fanning of Los Alamos sharing a laugh with her grandson.*

## GRANDPARENTS & KIN Raising Children

A growing yet underserved segment of our state speaks up on the joys and challenges of raising their grandchildren and kin.

### ANNA MARIE GARCIA

Grandparents and kin raising or helping to raise children is so common in our state that many of us do not think twice when we encounter families or households with children where the parents are not present. But the growing number of grandparents and kin raising children is shedding light on the numerous challenges and struggles that many endure to keep their families intact. An estimated 31,000 kids in our state are being raised by grandparents, though this number is very likely under-reported and it does not include children being raised by relatives, such as aunts, uncles, and siblings. It also may not include families in which grandparents play a parental role part of the time or temporarily. What is not in doubt is that many of the grandparents and kin raising children struggle to find the resources they need. Meanwhile, this community is saving the state millions of dollars a year by keeping many of these children out of the overburdened foster care system.

Foster parents receive monthly reimbursements to help them provide food, clothing, shelter, and transportation for their foster children. Grandparents and kin receive no such reimbursements from the state. And while foster parents are approved after a lengthy process for which they volunteer, many grandparents and relatives find themselves in the position of being a full-time caregiver with little or no time for preparation. In my role as Vice President of Early Childhood Education at the LANL Foundation, my team and I oversee a Grandparents/Kin Raising Children (GKRC) Advisory Council that aims to identify the needs facing this community and helps to support and connect them with the resources they need. In 2021, we conducted a survey to grandparents and kin, to assist in determining the specific needs and challenges facing this community. The survey was distributed to a little under one hundred families, and almost 80% of the surveys were completed.

This survey identified six core needs for grandparents and kin raising children: financial, respite, therapy/counseling, education training, stipends, mentorships for children and access to legal services.

### Respite

Far and away the most common challenge named by survey participants was not having enough time for themselves. This is especially challenging as many are at or reaching an age where they had



*Larry Acosta of Bosque Farms holds his napping grandson.*





Patricia Valerio of Española reading to two of her grandsons.

planned to retire but find themselves facing an entirely new full time role, for which many feel unprepared. “I would have retired by now had I not had this additional child,” said one respondent. “I wouldn’t give her up, but I’d really like to retire.” The lack of respite also contributes to mental stress and physical health issues. As we all know, childcare is expensive and hard to find, and without it there are no breaks for grandparents to unwind and relax.

#### Therapy/Counseling

Many of our respondents reported needing therapy for themselves and/or the children they’re raising. It is quite common for grandparents and kin to assume parental roles when the parents have died, been incarcerated, or are unable to care for their kids due to drug addiction or other issues. This takes a heavy toll on both kids (whose parents are no longer present) and grandparents (who have lost their child in one way or another). Therapy can be expensive and inaccessible. Many counselors do not take insurance or are already at capacity for clients. Support groups can provide grandparents and relatives with a safe space to share experiences and advice, but they do not provide individual counseling.

#### Education Trainings

As many of us know, it is a whole new world of parenting. Online school, cell phones, cyber bullying, ADHD, autism, and dyslexia are just some of the territories that grandparents would like help navigating. Many of the children they are raising have experienced trauma or toxic stress, and grandparents and kin

are often tasked with supporting them through the struggles that often follow. LANL Foundation offers free training in areas of nutrition, selfcare, supporting children with autism, and more. You can follow us on Facebook or Instagram (@lanl foundation) to stay informed of our learning opportunities. The trainings are offered in a number of different ways, such as in person, on-line, or hybrid.

#### Stipends

Kids are expensive. Over 60% of our survey respondents said they struggle financially. Over 20% of the grandparents raising children in our state live in poverty. “We were not financially prepared to raise children once again,” said one respondent. “My vehicle needs maintenance for commuting to school, the therapist, and doctors. My granddaughter needs a Chromebook or computer to do her homework,” said another. While there are some state stipends available to grandparents and kin who legally adopt the children they’re raising, only 14.5% of survey respondents said that they had completed the adoption process. Adding insult to injury, the adoption process itself is very costly in both time and money.

#### Mentorship for Kids

A mentor can play a valuable role in a child’s life both as someone to provide emotional support and as someone who can help prepare children for college or careers. Children who have undergone trauma are in particular need of these positive relationships. These mentors also help ease the burden for grandparents by giving them some downtime

and helping with school subjects or technology that grandparents might struggle with. Finding these mentors, however, is not easy. According to Big Brothers Big Sisters of Central New Mexico, the process of matching a child to a mentor can take up to two years, depending on the availability of volunteers.

#### Legal Aid Services

The legal issues surrounding raising a child that is not your own are numerous and complicated. Over 50% of respondents to our survey indicated that they did not know or were uncertain as to the legal status of their relationship with the children they are raising. Only 11% said they had legal custody of their kids. Many of them said they just stepped into a guardian role when the parent(s) of the children either left, were imprisoned, or passed away. Despite the unplanned nature of many of these arrangements, they often become permanent or persist for years. Over 73% of respondents to our survey said they’ve been responsible for their grandchildren or kin for five years or more. Obtaining custody, however, is a lengthy and complex process. Some grandparents do not seek custody because of the additional emotional stress that a custody battle involves. Others would very much like to seek custody, but accessing affordable legal advice is near impossible. “Many legal aid services do not take on adoption cases or they are backlogged with many cases,” said one respondent. “I’m moving towards adoption, but the attorney fees are tremendous,” said another. Even approaching an attorney is an intimidating thought for many families

who are unsure if the children in their care might be taken away from them because they do not have a written custody arrangement. Until the state delivers on more substantial resources for grandparents and kin raising children—and we are working on that—here are some helpful resources.

#### Barrios Unidos

barriosunidoschimayo.org

#### Disability Right New Mexico

drnm.org

#### Growing Up New Mexico Bridges to Opportunity Program

growingupnm.org/programs/bridges-to-opportunity/

#### Las Cumbres Community Services

lascumbres-nm.org/grandparents-raising-grandchildren

#### Los Alamos Family Strengths

Network: lafsn.org

#### Moving Arts

Española: movingartsespanola.org

#### Tewa Roots

Society: tewarootssociety.com

#### Eight Northern Indian Pueblos

Council: enipc.org

*Anna Marie Garcia is LANL Foundation’s vice president of early childhood education. Having earned a master’s degree in early childhood/special education, Anna Marie is currently pursuing a doctorate in early childhood social justice. Anna Marie is passionate about building and strengthening local communities through advocacy, education, and meaningful collaboration.*

**INDOOR AFTER SCHOOL CLIMBING**  
Get ready for some after school fun and exploring the world of indoor rock climbing!

**\$140**  
Register now!

**STARTS**  
January 8th

Monday - Thursday  
3:45-5:15  
Friday 1:30-3:00  
Saturday 12:30-2:00

505-986-8944 - info@climbsantafe.com - climbsantafe.com

**SANTA FE CLIMBING CENTER**



# Are you a Grandparent raising Grandchildren?



## Legal & Advocacy Needs

### Pegasus Legal Services for Children

505-217-1660  
pegasuslaw.org

### Advocacy Inc. - New Mexico Guardianship Project

1-866-257-5320  
nmadvocacy.org

### Legal Resources for the Elderly Program

1-800-876-6657  
sbnm.org

Grandfamilies  
grandfamilies.org



## Financial & Food Assistance

### NM Human Services Department - Income Support Division

1-800-283-4465  
hsd.state.nm.us

### NM Children, Youth & Families Department - Kinship Guardianship Program

505-373-4642  
sharenm.org

### NM Early Childhood Education & Care Department

1-800-832-1321  
nmececd.org

### City of Santa Fe Division of Senior Services

505-955-4721  
santafenm.gov



## Other Resources

Las Cumbres  
505-955-0410  
lascumbres-nm.org

Outcomes, Inc.  
505-243-2551  
outcomesnm.org

Head Start & Early Head Start  
1-866-763-6481  
newmexicokids.org

Methodist Children's Home  
Family Outreach, .  
Grandparents as Parents  
505-255-8740  
mch.org/services/gap/

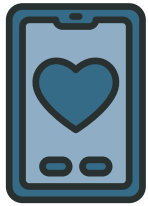


1-800-432-2080  
aging.nm.gov

NEW MEXICO  
**AGING &  
LONG-TERM  
SERVICES**  
DEPARTMENT



# News Briefs



## Accessing **Child Support Services**

Is a *Phone Call Away*

The purpose of the New Mexico Child Support Services Division (CSSD) is to establish and enforce the support obligations owed by parents for their children, thereby reducing the number of families reliant on public assistance. The CSSD can assist with collecting child support on behalf of New Mexico's children.

THE CSSD can help establish paternity, child support obligations, collect child support, and enforce child support court orders. Certain tools can be used to ensure compliance with child support orders such as wage withholding,

income tax refund intercepts, driver and professional license suspension, game and fish license suspension, and passport denials.

During the last fiscal year, the CSSD collected \$121.1 million in child support collections, with 64 percent of those payments made through employer wage withholdings.

Parents are encouraged to learn more about the child support program and apply for services by visiting **Yes.NM.gov** or contacting HSD at **1-800-283-4465**.



*Photo of Chris Lawrence.*

### **Chris Lawrence** Recognized as the

#### ***Elementary Art Educator***



The New Mexico Art Education Association awarded Chris Lawrence of Santa Fe as the Elementary Art Educator of the Year. He was formally recognized with the honor at the Association's October conference. The Association's professional award program is a way for art educators to recognize their colleagues' achievements in the classroom and within the art education community.

As an art teacher at Chaparral and Piñon Elementary Schools, Chris has over 15 years of experience teaching art to K-12 students. Chris holds a masters degree in art education and is a national board certified art teacher, which is the most respected professional certification available in education. He taught high school and adult classes at the Museum of Art in Las Cruces before moving to Santa Fe in 2013. He is currently in his tenth year of teaching for SFPS.

While Chris specializes in ceramic art, he is also an outdoor enthusiast and river advocate who enjoys traveling, canoeing, skiing, biking, camping, and spending time with his wife of 28 years, Andrea, and his dog, Lyra.

Congratulations Chrise and thank you for sharing the joy of art with our kiddos!

## Board Statement on Leadership Transition at **NM Voices for Children**

It is with deep gratitude that the Board of Directors announces the departure of Amber Wallin as New Mexico Voices for Children's executive director. After 11 years at NM Voices, Amber has accepted a senior position at the State Revenue Alliance. Amber's final day with NM Voices was in October.

Amber has been with NM Voices since 2012, when she was brought on as a Center on Budget and Policy Priorities fiscal policy fellow. She later served as a research and policy analyst, the director of NM Voices' Kids Count program, and deputy director before taking over as executive director in 2022. Amber is a state and nationally recognized expert on issues related to child and family well-being and fiscal policy. She has served on multiple fiscal policy and child well-being advisory committees among policy networks, philanthropic

organizations, and governmental bodies, and regularly shares information and recommendations on how to build greater equity and opportunity for children and families. Among her many accomplishments during her tenure at NM Voices, she successfully advocated for the creation and then expansion of the state's Child Tax Credit, as well as the expansion of the state's Working Families Tax Credit and Low-Income Comprehensive Tax Rebate, was a witness for the groundbreaking Yazzie/Martinez K-12 funding lawsuit, and helped shepherd the successful completion of the nationally recognized constitutional amendment that guarantees permanent funding for early childhood care and education services from the state's multi-billion-dollar Land Grant School Fund.

Amber is looked to by policymakers and partners alike for her expertise, intuition, skills, and leadership on issues ranging from child well-being to racial and gender equity, as well as fiscal policy. Her stewardship of NM Voices has left the organization in a very strong position both internally and externally. She has helped build a team staffed with incredible talent and visionary thinking across all areas of the organization. Amber will continue to live and work in New Mexico and will keep an active hand in New Mexico fiscal policy given her role in the State Revenue Alliance, of which NM Voices is a member. As the board searches for a new executive director, two long-term staff members, Bill Jordan (government relations officer), and Farah Council (director of operations and organizational effectiveness) will act as interim codirectors. Our goal is to

find the best person to lead NM Voices as it continues its work to improve child and family well-being, to break down the systems and structures that create and exacerbate racial and gender disparities, and to create economic justice so that all New Mexicans have the opportunities and resources they need to thrive.

We'd also like to take this opportunity to congratulate the five members of our policy team who recently received promotions. They are Jacob Vigil, Paige Knight, Javier Rojo, Emily Wildau, and Lydia Paukei.

Although we are saddened by Amber's departure, we are grateful for all she has done for NM Voices and for children across New Mexico, are excited for her next steps, and wish her the very best with her future endeavors.



# Winter Calendar

## December

Sunday	Monday	Tuesday	Wednesday
3 <ul style="list-style-type: none"><li>► Dawn 'Til Dusk Day <b>All Day</b></li><li>► Free First Sundays <b>All Day</b></li><li>► Santa Fe Youth Symphony's Winter Concert Series <b>6 - 7 PM</b></li></ul>	4 <ul style="list-style-type: none"><li>► Music and Movement in Los Alamos <b>9:30 - 10 AM</b></li><li>► Nature Playtime <b>10 - 11 AM</b></li><li>► Elements of Art: Storytime <b>10 - 11 AM</b></li><li>► Meow Wolf Monday Funday <b>3 - 8 PM</b></li><li>► Birth Talk Los Alamos <b>6:30 - 8:30 PM</b></li></ul>	5 <ul style="list-style-type: none"><li>► Chit-Chat Playtime <b>9:30 - 10:30 AM</b></li><li>► Babytime in Los Alamos <b>10:15 - 11 AM</b></li><li>► Storytime and Craft at Southside Library <b>10:30 - 11:30 AM</b></li><li>► Grab-N-Go Crafts <b>1:30 - 3:30 PM</b></li><li>► After School Art at Main Library <b>3:30 - 4:30 PM</b></li><li>Kid Nature Party: Krampus Masks <b>3:30 - 5 PM</b></li></ul>	6 <ul style="list-style-type: none"><li>► Music and Movement in Los Alamos <b>9:30 - 10 AM</b></li><li>► Storytime at White Rock Branch Library <b>10:15 - 10:45 AM</b></li><li>► Bilingual Books and Babies at Main Library <b>10:30 - 11:30 AM</b></li><li>► Toddler Tunes <b>10:30 - 11 AM</b></li><li>► Queen Bee's Kids Sing-Along <b>10:30 - 11:15 AM</b></li><li>► Storytime and Craft at La Farge Library <b>10:30 - 11:30 AM</b></li><li>► Wee Wednesdays <b>1:30 - 3 PM</b></li><li>► What's Up Wednesdays <b>1:30 - 3 PM</b></li><li>► Teen Lounge at La Farge Library <b>1:30 - 3:30 PM</b></li><li>► Kids Sing-Along at Southside Library <b>3:15 - 4 PM</b></li><li>► Play Pichenotte <b>4 - 6 PM</b></li><li>► Youth Chess at Main Library <b>5:45 - 7:45 PM</b></li></ul>
10 <ul style="list-style-type: none"><li>Blippi: The Wonderful World Tour <b>4 - 5 PM</b></li><li>Sounds of the Season <b>4 - 5 PM</b></li></ul>	11 <ul style="list-style-type: none"><li>► Nature Playtime <b>10 - 11 AM</b></li><li>► Meow Wolf Monday Funday <b>3 - 8 PM</b></li><li>Homepages: Chapter Book <b>1:30 - 2:30 PM</b></li><li>► Grandparents Raising Grandchildren <b>6 - 7 PM</b></li><li>► Trans + Nonbinary Family Support Group <b>6:25 - 7:30 PM</b></li></ul>	12 <ul style="list-style-type: none"><li>► Music and Movement in Los Alamos <b>9:30 - 10 AM</b></li><li>► Chit-Chat Playtime <b>9:30 - 10:30 AM</b></li><li>► Babytime in Los Alamos <b>10:15 - 11 AM</b></li><li>► Storytime and Craft at Southside Library <b>10:30 - 11:30 AM</b></li><li>► Grab-N-Go Crafts <b>1:30 - 3:30 PM</b></li><li>► After School Art at Main Library <b>3:30 - 4:30 PM</b></li><li>Family Read-In Party <b>7 - 7 PM</b></li></ul>	13 <ul style="list-style-type: none"><li>► Music and Movement in Los Alamos <b>9:30 - 10 AM</b></li><li>► Storytime at White Rock Branch Library <b>10:15 - 10:45 AM</b></li><li>► Bilingual Books and Babies at Main Library <b>10:30 - 11:30 AM</b></li><li>► Queen Bee's Kids Sing-Along <b>10:30 - 11:15 AM</b></li><li>► Storytime and Craft at La Farge Library <b>10:30 - 11:30 AM</b></li><li>► Wee Wednesdays <b>1:30 - 3 PM</b></li><li>► What's Up Wednesdays <b>1:30 - 3 PM</b></li><li>► Teen Lounge at La Farge Library <b>1:30 - 3:30 PM</b></li><li>► Kids Sing-Along at Southside Library <b>3:15 - 4 PM</b></li><li>► Adventures in STEM <b>1:30 - 2:30 PM</b></li><li>New Mexico Desert Chorale Pop-up Carols <b>5:30 - 6 PM</b></li><li>► Youth Chess at Main Library <b>5:45 - 7:45 PM</b></li></ul>
17	18 <ul style="list-style-type: none"><li>► Nature Playtime <b>10 - 11 AM</b></li><li>► Elements of Art: Storytime <b>10 - 11 AM</b></li><li>► Meow Wolf Monday Funday <b>3 - 8 PM</b></li></ul>	19 <ul style="list-style-type: none"><li>► Music and Movement in Los Alamos <b>9:30 - 10 AM</b></li><li>► Chit-Chat Playtime <b>9:30 - 10:30 AM</b></li><li>► Babytime in Los Alamos <b>10:15 - 11 AM</b></li><li>► Storytime and Craft at Southside Library <b>10:30 - 11:30 AM</b></li><li>► Grab-N-Go Crafts <b>1:30 - 3:30 PM</b></li><li>► After School Art at Main Library <b>3:30 - 4:30 PM</b></li><li>► Family Gingerbread House Making <b>3:30 - 4:30 PM</b></li><li><b>SANTA FE PUBLIC SCHOOLS CLOSED THROUGH 1/3</b></li></ul>	20 <ul style="list-style-type: none"><li>► Music and Movement in Los Alamos <b>9:30 - 10 AM</b></li><li>► Toddler Craft Time <b>10 - 11 AM</b></li><li>► Storytime at White Rock Branch Library <b>10:15 - 10:45 AM</b></li><li>► Bilingual Books and Babies at Main Library <b>10:30 - 11:30 AM</b></li><li>► Queen Bee's Kids Sing-Along <b>10:30 - 11:15 AM</b></li><li>► Storytime and Craft at La Farge Library <b>10:30 - 11:30 AM</b></li><li>► Wee Wednesdays <b>1:30 - 3 PM</b></li><li>► What's Up Wednesdays <b>1:30 - 3 PM</b></li><li>► Teen Lounge at La Farge Library <b>1:30 - 3:30 PM</b></li><li>► Kids Sing-Along at Southside Library <b>3:15 - 4 PM</b></li><li>► Youth Chess at Main Library <b>5:45 - 7:45 PM</b></li></ul>
24 <ul style="list-style-type: none"><li>Luminaria Skate <b>3:30 - 5 PM</b></li><li>Christmas Eve Farolito Walk <b>5 - 10 PM</b></li><li><b>CHRISTMAS EVE</b></li></ul>	25 <ul style="list-style-type: none"><li><b>CHRISTMAS DAY</b></li></ul>	26 <ul style="list-style-type: none"><li><b>ESPAÑOLA AND LOS ALAMOS SCHOOLS CLOSED THROUGH 1/9</b></li><li><b>BOXING DAY</b></li><li><b>KWANZAA BEGINS</b></li></ul>	27 <ul style="list-style-type: none"><li>Bach and Beyond for Families <b>10 - 11 AM</b></li><li>► Queen Bee's Kids Sing-Along <b>10:30 - 11:15 AM</b></li><li>► Storytime and Craft at La Farge Library <b>10:30 - 11:30 AM</b></li><li>► Wee Wednesdays <b>1:30 - 3 PM</b></li><li>► Youth Chess at Main Library <b>5:45 - 7:45 PM</b></li></ul>
31 <ul style="list-style-type: none"><li>New Year's Eve on the Santa Fe Plaza <b>10 PM - 12 AM</b></li><li><b>NEW YEAR'S EVE</b></li></ul>			

### LEGEND

- RECURRING EVENT

- SPECIAL EVENTS
- SUPPORT & COMMUNITY
- SPORTS & ACTIVITY
- VISUAL ARTS

- PERFORMING ARTS
- EDUCATION/ENRICHMENT
- NATURE
- ENTERTAINMENT



Thursday	Friday	Saturday
	1 <ul style="list-style-type: none"><li>NM Biopark's River of Lights <b>Every Day Until 12/30 5 - 10 PM</b></li><li>The Nutcracker at Popejoy <b>2 - 4 PM</b></li><li>Los Alamos Winterfest <b>9 AM - 8 PM</b></li><li>Bilingual Books and Babies at La Farge Library <b>10 - 10:30 AM</b></li><li>Tour Make Santa Fe <b>6 - 7:30 PM</b></li><li>First Friday Fractals <b>8 &amp; 9 PM</b></li></ul>	2 <ul style="list-style-type: none"><li>Music and Movement in Los Alamos <b>9:30 - 10 AM</b></li><li>Bilingual Books and Babies at Southside Library <b>10 - 10:30 AM</b></li><li>Parent and Tot Creative Movement at Main Library <b>10 - 10:30 AM</b></li><li>Storytime at Mesa Public Library <b>10 - 10:30 AM</b></li><li>Baby and Toddler Play Hour at Main Library <b>10 - 10:30 AM</b></li><li>Read to a Pup Southside Library <b>11:30 - 12:30 AM</b></li><li>Meet Cornelius the Snake <b>1 - 2 PM</b></li><li>Science Saturdays <b>2 - 4 PM</b></li><li>Twinkle Light Parade <b>5 - 6 PM</b></li><li>Los Alamos Holiday Lights Parade <b>6 - 7 PM</b></li><li>Free Night for Foster and Adoptive Families at Explora <b>6 - 8 PM</b></li><li>Santa Fe Youth Symphony's Winter Concert Series <b>6 - 7 PM</b></li></ul>
7 <ul style="list-style-type: none"><li>Music and Movement in Los Alamos <b>9:30 - 10 AM</b></li><li>Storytime at Mesa Public Library <b>10:30 - 11 AM</b></li><li>Seeds and Sprouts <b>10:30 - 11:30 AM</b></li><li>Storytime and Craft at Main Library <b>10:30 - 11:30 AM</b></li><li>Yoga and Movement for Kids <b>10:30 - 11:30</b></li><li>Fun with Firefighters <b>1 - 2 PM</b></li><li>Thursdays are Yours <b>4 - 7 PM</b></li><li>Intro to Block Printing and Holiday Cards <b>3:30 - 4:30 PM</b></li><li>Pajama Storytime at Southside Library <b>6:30 - 7:30 AM</b></li></ul> <b>HANUKKAH BEGINS</b>	8 <ul style="list-style-type: none"><li>Bilingual Books and Babies at La Farge Library <b>10 - 10:30 AM</b></li><li>Tour Make Santa Fe <b>6 - 7:30 PM</b></li></ul>	9 <ul style="list-style-type: none"><li>Music and Movement in Los Alamos <b>9:30 - 10 AM</b></li><li>Bilingual Books and Babies at Southside Library <b>10 - 10:30 AM</b></li><li>Parent and Tot Creative Movement at Main Library <b>10 - 10:30 AM</b></li><li>Storytime at Mesa Public Library <b>10 - 10:30 AM</b></li><li>Baby and Toddler Play Hour at Main Library <b>10:30 - 11:30 AM</b></li><li>Read to a Pup Southside Library <b>11:30 - 12:30 AM</b></li><li>Meet Cornelius the Snake <b>1 - 2 PM</b></li><li>Science Saturdays <b>2 - 4 PM</b></li><li>Coffee Talk and Clothing Swap <b>11 AM - 1 PM</b></li><li>"My Favorite Book" Community Book Swap <b>1 - 3 PM</b></li></ul>
14 <ul style="list-style-type: none"><li>Music and Movement in Los Alamos <b>9:30 - 10 AM</b></li><li>Storytime at Mesa Public Library <b>10:30 - 11 AM</b></li><li>Seeds and Sprouts <b>10:30 - 11:30 AM</b></li><li>Storytime and Craft at Main Library <b>10:30 - 11:30 AM</b></li><li>Yoga and Movement for Kids <b>10:30 - 11:30</b></li><li>Thursdays are Yours <b>4 - 7 PM</b></li><li>Pajama Storytime at Southside Library <b>6:30 - 7:30 AM</b></li><li>Anime Club <b>5:30 - 7:30 PM</b></li></ul>	15 <ul style="list-style-type: none"><li>Bilingual Books and Babies at La Farge Library <b>10 - 10:30 AM</b></li><li>Tour Make Santa Fe <b>6 - 7:30 PM</b></li></ul>	16 <ul style="list-style-type: none"><li>Bilingual Books and Babies at Southside Library <b>10 - 10:30 AM</b></li><li>Storytime at Mesa Public Library <b>10:30 - 11 AM</b></li><li>Science Saturdays <b>2 - 4 PM</b></li><li>Saturday Afternoon Movie: The Polar Express <b>4 - 6 PM</b></li></ul>
21 <ul style="list-style-type: none"><li>Music and Movement in Los Alamos <b>9:30 - 10 AM</b></li><li>Autism Support Group <b>10 - 11 AM</b></li><li>Storytime at Mesa Public Library <b>10:30 - 11 AM</b></li><li>Seeds and Sprouts <b>10:30 - 11:30 AM</b></li><li>Storytime and Craft at Main Library <b>10:30 - 11:30 AM</b></li><li>Thursdays are Yours <b>4 - 7 PM</b></li><li>Pajama Storytime at Southside Library <b>6:30 - 7:30 AM</b></li></ul> <b>WINTER BEGINS</b>	22 <ul style="list-style-type: none"><li>Bilingual Books and Babies at La Farge Library <b>10 - 10:30 AM</b></li><li>Family Gingerbread House Making <b>3:30 - 4:30 PM</b></li><li>Tour Make Santa Fe <b>6 - 7:30 PM</b></li></ul>	23 <ul style="list-style-type: none"><li>Music and Movement in Los Alamos <b>9:30 - 10 AM</b></li><li>Bilingual Books and Babies at Southside Library <b>10 - 10:30 AM</b></li><li>Parent and Tot Creative Movement at Main Library <b>10 - 10:30 AM</b></li><li>Storytime at Mesa Public Library <b>10 - 10:30 AM</b></li><li>Baby and Toddler Play Hour at Main Library <b>10:30 - 11:30 AM</b></li><li>Read to a Pup Southside Library <b>11:30 - 12:30 AM</b></li><li>Meet Cornelius the Snake <b>1 - 2 PM</b></li><li>Science Saturdays <b>2 - 4 PM</b></li><li>Skate with Santa <b>3:30 - 5 PM</b></li></ul>
28 <ul style="list-style-type: none"><li>Seeds and Sprouts <b>10:30 - 11:30 AM</b></li><li>Thursdays are Yours <b>4 - 7 PM</b></li><li>Pajama Storytime at Southside Library <b>6:30 - 7:30 AM</b></li></ul>	29 <ul style="list-style-type: none"><li>Tour Make Santa Fe <b>6 - 7:30 PM</b></li></ul>	30 <ul style="list-style-type: none"><li>Meet Cornelius the Snake <b>1 - 2 PM</b></li><li>Science Saturdays <b>2 - 4 PM</b></li></ul>



# Winter Calendar

## January

Sunday	Monday	Tuesday	Wednesday
3 <ul style="list-style-type: none"><li>► Dawn 'Til Dusk Day <b>All Day</b></li><li>► Free First Sundays <b>All Day</b></li></ul>	4 <ul style="list-style-type: none"><li>► Nature Playtime <b>10 - 11 AM</b></li><li>► Meow Wolf Monday Funday <b>3 - 8 PM</b></li><li>► Birth Talk Los Alamos <b>6:30 - 8:30 PM</b></li></ul>	5 <ul style="list-style-type: none"><li>► Music and Movement in Los Alamos <b>9:30 - 10 AM</b></li><li>► Chit-Chat Playtime <b>9:30 - 10:30 AM</b></li><li>► Babytime in Los Alamos <b>10:15 - 11 AM</b></li><li>► Storytime and Craft at Southside Library <b>10:30 - 11:30 AM</b></li><li>► Grab-N-Go Crafts <b>1:30 - 3:30 PM</b></li><li>► After School Art at Main Library <b>3:30 - 4:30 PM</b></li></ul>	6 <ul style="list-style-type: none"><li>► Music and Movement in Los Alamos <b>9:30 - 10 AM</b></li><li>► Storytime at White Rock Branch Library <b>10:15 - 10:45 AM</b></li><li>► Bilingual Books and Babies at Main Library <b>10:30 - 11:30 AM</b></li><li>► Toddler Tunes <b>10:30 - 11 AM</b></li><li>► Queen Bee's Kids Sing-Along <b>10:30 - 11:15 AM</b></li><li>► Storytime and Craft at La Farge Library <b>10:30 - 11:30 AM</b></li><li>► Wee Wednesdays <b>1:30 - 3 PM</b></li><li>► What's Up Wednesdays <b>1:30 - 3 PM</b></li><li>► Teen Lounge at La Farge Library <b>1:30 - 3:30 PM</b></li><li>► Kids Sing-Along at Southside Library <b>3:15 - 4 PM</b></li><li>► Play Pichenotte <b>4 - 6 PM</b></li><li>► Youth Chess at Main Library <b>5:45 - 7:45 PM</b></li></ul>
10	11 <ul style="list-style-type: none"><li>► Nature Playtime <b>10 - 11 AM</b></li><li>► Elements of Art: Storytime <b>10 - 11 AM</b></li><li>► Meow Wolf Monday Funday <b>3 - 8 PM</b></li><li>► Grandparents Raising Grandchildren <b>6 - 7 PM</b></li><li>► Trans + Nonbinary Family Support Group <b>6:25 - 7:30 PM</b></li></ul>	12 <ul style="list-style-type: none"><li>► Music and Movement in Los Alamos <b>9:30 - 10 AM</b></li><li>► Chit-Chat Playtime <b>9:30 - 10:30 AM</b></li><li>► Babytime in Los Alamos <b>10:15 - 11 AM</b></li><li>► Storytime and Craft at Southside Library <b>10:30 - 11:30 AM</b></li><li>► After School Art at Main Library <b>3:30 - 4:30 PM</b></li></ul>	13 <ul style="list-style-type: none"><li>► Music and Movement in Los Alamos <b>9:30 - 10 AM</b></li><li>► Storytime at White Rock Branch Library <b>10:15 - 10:45 AM</b></li><li>► Bilingual Books and Babies at Main Library <b>10:30 - 11:30 AM</b></li><li>► Queen Bee's Kids Sing-Along <b>10:30 - 11:15 AM</b></li><li>► Storytime and Craft at La Farge Library <b>10:30 - 11:30 AM</b></li><li>► Wee Wednesdays <b>1:30 - 3 PM</b></li><li>► What's Up Wednesdays <b>1:30 - 3 PM</b></li><li>► Teen Lounge at La Farge Library <b>1:30 - 3:30 PM</b></li><li>► Kids Sing-Along at Southside Library <b>3:15 - 4 PM</b></li><li>► Adventures in STEM <b>1:30 - 2:30 PM</b></li><li>► Youth Chess at Main Library <b>5:45 - 7:45 PM</b></li></ul>
17	18 <ul style="list-style-type: none"><li>► Nature Playtime <b>10 - 11 AM</b></li><li>► Meow Wolf Monday Funday <b>3 - 8 PM</b></li></ul>	19 <ul style="list-style-type: none"><li>► Music and Movement in Los Alamos <b>9:30 - 10 AM</b></li><li>► Chit-Chat Playtime <b>9:30 - 10:30 AM</b></li><li>► Babytime in Los Alamos <b>10:15 - 11 AM</b></li><li>► Storytime and Craft at Southside Library <b>10:30 - 11:30 AM</b></li><li>► After School Art at Main Library <b>3:30 - 4:30 PM</b></li></ul>	20 <ul style="list-style-type: none"><li>► Music and Movement in Los Alamos <b>9:30 - 10 AM</b></li><li>► Toddler Craft Time <b>10 - 11 AM</b></li><li>► Bilingual Books and Babies at Main Library <b>10:30 - 11:30 AM</b></li><li>► Storytime at White Rock Branch Library <b>10:15 - 10:45 AM</b></li><li>► Queen Bee's Kids Sing-Along <b>10:30 - 11:15 AM</b></li><li>► Storytime and Craft at La Farge Library <b>10:30 - 11:30 AM</b></li><li>► Wee Wednesdays <b>1:30 - 3 PM</b></li><li>► What's Up Wednesdays <b>1:30 - 3 PM</b></li><li>► Teen Lounge at La Farge Library <b>1:30 - 3:30 PM</b></li><li>► Kids Sing-Along at Southside Library <b>3:15 - 4 PM</b></li><li>► Youth Chess at Main Library <b>5:45 - 7:45 PM</b></li></ul>
24	25 <ul style="list-style-type: none"><li>► Nature Playtime <b>10 - 11 AM</b></li><li>► Elements of Art: Storytime <b>10 - 11 AM</b></li><li>► Meow Wolf Monday Funday <b>3 - 8 PM</b></li></ul>	26 <ul style="list-style-type: none"><li>► Music and Movement in Los Alamos <b>9:30 - 10 AM</b></li><li>► Chit-Chat Playtime <b>9:30 - 10:30 AM</b></li><li>► Babytime in Los Alamos <b>10:15 - 11 AM</b></li><li>► Storytime and Craft at Southside Library <b>10:30 - 11:30 AM</b></li><li>► Grab-N-Go Crafts <b>1:30 - 3:30 PM</b></li><li>► After School Art at Main Library <b>3:30 - 4:30 PM</b></li></ul>	27 <ul style="list-style-type: none"><li>► Music and Movement in Los Alamos <b>9:30 - 10 AM</b></li><li>► Bilingual Books and Babies at Main Library <b>10:30 - 11:30 AM</b></li><li>► Queen Bee's Kids Sing-Along <b>10:30 - 11:15 AM</b></li><li>► Storytime and Craft at La Farge Library <b>10:30 - 11:30 AM</b></li><li>► Wee Wednesdays <b>1:30 - 3 PM</b></li><li>► What's Up Wednesdays <b>1:30 - 3 PM</b></li><li>► Teen Lounge at La Farge Library <b>1:30 - 3:30 PM</b></li><li>► Kids Sing-Along at Southside Library <b>3:15 - 4 PM</b></li><li>► Youth Chess at Main Library <b>5:45 - 7:45 PM</b></li></ul>

### LEGEND

► RECURRING EVENT



SPECIAL EVENTS

SUPPORT & COMMUNITY

SPORTS & ACTIVITY

VISUAL ARTS

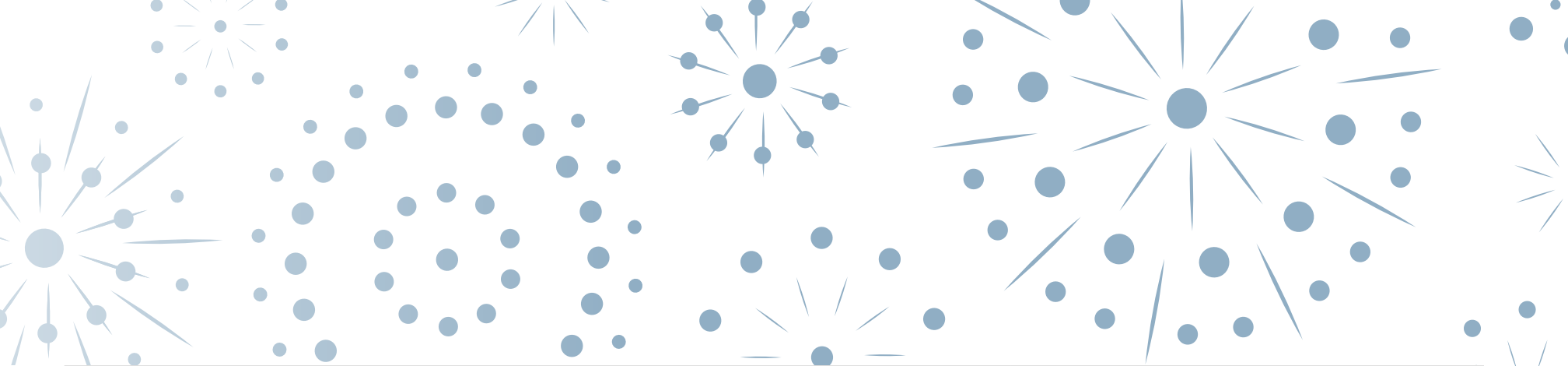
PERFORMING ARTS

EDUCATION/ENRICHMENT

NATURE

ENTERTAINMENT





Thursday	Friday	Saturday
<div>▶ Music and Movement in Los Alamos 9:30 - 10 AM</div> <div>▶ Storytime at Mesa Public Library 10:30 - 11 AM</div> <div>▶ Seeds and Sprouts 10:30 - 11:30 AM</div> <div>▶ Storytime and Craft at Main Library 10:30 - 11:30 AM</div> <div>▶ Yoga and Movement for Kids 10:30 - 11:30</div> <div>▶ Fun with Firefighters 1 - 2 PM</div> <div>▶ Thursdays are Yours 4 - 7 PM</div> <div>▶ Pajama Storytime at Southside Library 6:30 - 7:30 AM</div>	<div>1</div> <div>▶ Bilingual Books and Babies at La Farge Library 10 - 10:30 AM</div> <div>▶ Tour Make Santa Fe 6 - 7:30 PM</div> <div>▶ First Friday Fractals 8 &amp; 9 PM</div>	<div>2</div> <div>▶ Music and Movement in Los Alamos 9:30 - 10 AM</div> <div>▶ Bilingual Books and Babies at Southside Library 10 - 10:30 AM</div> <div>▶ Parent and Tot Creative Movement at Main Library 10 - 10:30 AM</div> <div>▶ Storytime at Mesa Public Library 10 - 10:30 AM</div> <div>▶ Baby and Toddler Play Hour at Main Library 10 - 10:30 AM</div> <div>▶ Read to a Pup Southside Library 11:30 - 12:30 AM</div> <div>▶ Meet Cornelius the Snake 1 - 2 PM</div> <div>Santa Fe Opera Young Voices Concert 1- 2 PM</div> <div>▶ Science Saturdays 2 - 4 PM</div>
<div>7</div> <div>▶ Music and Movement in Los Alamos 9:30 - 10 AM</div> <div>▶ Seeds and Sprouts 10:30 - 11:30 AM</div> <div>▶ Storytime and Craft at Main Library 10:30 - 11:30 AM</div> <div>▶ Yoga and Movement for Kids 10:30 - 11:30</div> <div>▶ Thursdays are Yours 4 - 7 PM</div> <div>▶ Pajama Storytime at Southside Library 6:30 - 7:30 AM</div> <div>▶ Anime Club 5:30 - 7:30 PM</div>	<div>8</div> <div>▶ Bilingual Books and Babies at La Farge Library 10 - 10:30 AM</div> <div>▶ Tour Make Santa Fe 6 - 7:30 PM</div> <div>Fine Art Friday with Alas De Agua 2 - 4 PM</div>	<div>9</div> <div>▶ Music and Movement in Los Alamos 9:30 - 10 AM</div> <div>▶ Bilingual Books and Babies at Southside Library 10 - 10:30 AM</div> <div>▶ Parent and Tot Creative Movement at Main Library 10 - 10:30 AM</div> <div>▶ Storytime at Mesa Public Library 10 - 10:30 AM</div> <div>▶ Baby and Toddler Play Hour at Main Library 10:30 - 11:30 AM</div> <div>▶ Read to a Pup Southside Library 11:30 - 12:30 AM</div> <div>▶ Meet Cornelius the Snake 1 - 2 PM</div> <div>▶ Science Saturdays 2 - 4 PM</div>
<div>14</div> <div>▶ Music and Movement in Los Alamos 9:30 - 10 AM</div> <div>▶ Storytime at Mesa Public Library 10:30 - 11 AM</div> <div>▶ Seeds and Sprouts 10:30 - 11:30 AM</div> <div>▶ Storytime and Craft at Main Library 10:30 - 11:30 AM</div> <div>▶ Yoga and Movement for Kids 10:30 - 11:30</div> <div>▶ Thursdays are Yours 4 - 7 PM</div> <div>▶ Pajama Storytime at Southside Library 6:30 - 7:30 AM</div>	<div>15</div> <div>▶ Bilingual Books and Babies at La Farge Library 10 - 10:30 AM</div> <div>▶ Tour Make Santa Fe 6 - 7:30 PM</div>	<div>16</div> <div>▶ Music and Movement in Los Alamos 9:30 - 10 AM</div> <div>▶ Parent and Tot Creative Movement at Main Library 10 - 10:30 AM</div> <div>▶ Bilingual Books and Babies at Southside Library 10 - 10:30 AM</div> <div>▶ Storytime at Mesa Public Library 10:30 - 11 AM</div> <div>▶ Baby and Toddler Play Hour at Main Library 10:30 - 11:30 AM</div> <div>▶ Read to a Pup Southside Library 11:30 - 12:30 AM</div> <div>▶ Meet Cornelius the Snake 1 - 2 PM</div> <div>▶ Science Saturdays 2 - 4 PM</div>
<div>21</div> <div>▶ Music and Movement in Los Alamos 9:30 - 10 AM</div> <div>▶ Autism Support Group 10 - 11 AM</div> <div>▶ Storytime at Mesa Public Library 10:30 - 11 AM</div> <div>▶ Seeds and Sprouts 10:30 - 11:30 AM</div> <div>▶ Storytime and Craft at Main Library 10:30 - 11:30 AM</div> <div>▶ Yoga and Movement for Kids 10:30 - 11:30</div> <div>▶ Thursdays are Yours 4 - 7 PM</div> <div>▶ Pajama Storytime at Southside Library 6:30 - 7:30 AM</div> <div>▶ Random Fandom 6 - 7:30 PM</div>	<div>22</div> <div>▶ Bilingual Books and Babies at La Farge Library 10 - 10:30 AM</div> <div>▶ Tour Make Santa Fe 6 - 7:30 PM</div>	<div>23</div> <div>▶ Music and Movement in Los Alamos 9:30 - 10 AM</div> <div>▶ Bilingual Books and Babies at Southside Library 10 - 10:30 AM</div> <div>▶ Parent and Tot Creative Movement at Main Library 10 - 10:30 AM</div> <div>▶ Storytime at Mesa Public Library 10 - 10:30 AM</div> <div>▶ Baby and Toddler Play Hour at Main Library 10:30 - 11:30 AM</div> <div>▶ Read to a Pup Southside Library 11:30 - 12:30 AM</div> <div>▶ Meet Cornelius the Snake 1 - 2 PM</div> <div>▶ Science Saturdays 2 - 4 PM</div>
<div>28</div> <div>▶ Music and Movement in Los Alamos 9:30 - 10 AM</div> <div>▶ Storytime at Mesa Public Library 10:30 - 11 AM</div> <div>▶ Seeds and Sprouts 10:30 - 11:30 AM</div> <div>▶ Storytime and Craft at Main Library 10:30 - 11:30 AM</div> <div>▶ Yoga and Movement for Kids 10:30 - 11:30</div> <div>▶ Thursdays are Yours 4 - 7 PM</div> <div>▶ Pajama Storytime at Southside Library 6:30 - 7:30 AM</div>	<div>29</div>	<div>30</div>



# Winter Calendar

## February



Sunday	Monday	Tuesday	Wednesday
4	5	6	7
<ul style="list-style-type: none"><li>► Dawn 'Til Dusk Day <b>All Day</b></li><li>► Free First Sundays <b>All Day</b></li></ul>	<ul style="list-style-type: none"><li>► Nature Playtime <b>10 - 11 AM</b></li><li>► Meow Wolf Monday Funday <b>3 - 8 PM</b></li><li>► Birth Talk Los Alamos <b>6:30 - 8:30 PM</b></li></ul>	<ul style="list-style-type: none"><li>► Music and Movement in Los Alamos <b>9:30 - 10 AM</b></li><li>► Chit-Chat Playtime <b>9:30 - 10:30 AM</b></li><li>► Babytime in Los Alamos <b>10:15 - 11 AM</b></li><li>► Storytime and Craft at Southside Library <b>10:30 - 11:30 AM</b></li><li>► Grab-N-Go Crafts <b>1:30 - 3:30 PM</b></li><li>► After School Art at Main Library <b>3:30 - 4:30 PM</b></li></ul>	<ul style="list-style-type: none"><li>► Music and Movement in Los Alamos <b>9:30 - 10 AM</b></li><li>► Storytime at White Rock Branch Library <b>10:15 - 10:45 AM</b></li><li>► Bilingual Books and Babies at Main Library <b>10:30 - 11:30 AM</b></li><li>► Toddler Tunes <b>10:30 - 11 AM</b></li><li>► Queen Bee's Kids Sing-Along <b>10:30 - 11:15 AM</b></li><li>► Storytime and Craft at La Farge Library <b>10:30 - 11:30 AM</b></li><li>► Wee Wednesdays <b>1:30 - 3 PM</b></li><li>► What's Up Wednesdays <b>1:30 - 3 PM</b></li><li>► Teen Lounge at La Farge Library <b>1:30 - 3:30 PM</b></li><li>► Kids Sing-Along at Southside Library <b>3:15 - 4 PM</b></li><li>► Play Pichenotte <b>4 - 6 PM</b></li><li>► Youth Chess at Main Library <b>5:45 - 7:45 PM</b></li></ul>
11	12	13	14
	<ul style="list-style-type: none"><li>► Nature Playtime <b>10 - 11 AM</b></li><li>► Elements of Art: Storytime <b>10 - 11 AM</b></li><li>► Meow Wolf Monday Funday <b>3 - 8 PM</b></li><li>► Grandparents Raising Grandchildren <b>6 - 7 PM</b></li><li>► Trans + Nonbinary Family Support Group <b>6:25 - 7:30 PM</b></li></ul>	<ul style="list-style-type: none"><li>► Music and Movement in Los Alamos <b>9:30 - 10 AM</b></li><li>► Chit-Chat Playtime <b>9:30 - 10:30 AM</b></li><li>► Babytime in Los Alamos <b>10:15 - 11 AM</b></li><li>► Storytime and Craft at Southside Library <b>10:30 - 11:30 AM</b></li><li>► After School Art at Main Library <b>3:30 - 4:30 PM</b></li></ul>	<ul style="list-style-type: none"><li>► Music and Movement in Los Alamos <b>9:30 - 10 AM</b></li><li>► Storytime at White Rock Branch Library <b>10:15 - 10:45 AM</b></li><li>► Bilingual Books and Babies at Main Library <b>10:30 - 11:30 AM</b></li><li>► Queen Bee's Kids Sing-Along <b>10:30 - 11:15 AM</b></li><li>► Storytime and Craft at La Farge Library <b>10:30 - 11:30 AM</b></li><li>► Wee Wednesdays <b>1:30 - 3 PM</b></li><li>► What's Up Wednesdays <b>1:30 - 3 PM</b></li><li>► Teen Lounge at La Farge Library <b>1:30 - 3:30 PM</b></li><li>► Kids Sing-Along at Southside Library <b>3:15 - 4 PM</b></li><li>► Adventures in STEM <b>1:30 - 2:30 PM</b></li><li>► Youth Chess at Main Library <b>5:45 - 7:45 PM</b></li></ul>
18	19	20	21
	<ul style="list-style-type: none"><li>► Nature Playtime <b>10 - 11 AM</b></li><li>► Meow Wolf Monday Funday <b>3 - 8 PM</b></li></ul>	<ul style="list-style-type: none"><li>► Music and Movement in Los Alamos <b>9:30 - 10 AM</b></li><li>► Chit-Chat Playtime <b>9:30 - 10:30 AM</b></li><li>► Babytime in Los Alamos <b>10:15 - 11 AM</b></li><li>► Storytime and Craft at Southside Library <b>10:30 - 11:30 AM</b></li><li>► After School Art at Main Library <b>3:30 - 4:30 PM</b></li></ul>	<ul style="list-style-type: none"><li>► Music and Movement in Los Alamos <b>9:30 - 10 AM</b></li><li>► Toddler Craft Time <b>10 - 11 AM</b></li><li>► Bilingual Books and Babies at Main Library <b>10:30 - 11:30 AM</b></li><li>► Storytime at White Rock Branch Library <b>10:15 - 10:45 AM</b></li><li>► Queen Bee's Kids Sing-Along <b>10:30 - 11:15 AM</b></li><li>► Storytime and Craft at La Farge Library <b>10:30 - 11:30 AM</b></li><li>► Wee Wednesdays <b>1:30 - 3 PM</b></li><li>► What's Up Wednesdays <b>1:30 - 3 PM</b></li><li>► Teen Lounge at La Farge Library <b>1:30 - 3:30 PM</b></li><li>► Kids Sing-Along at Southside Library <b>3:15 - 4 PM</b></li><li>► Youth Chess at Main Library <b>5:45 - 7:45 PM</b></li></ul>
25	26	27	28
	<ul style="list-style-type: none"><li>► Nature Playtime <b>10 - 11 AM</b></li><li>► Elements of Art: Storytime <b>10 - 11 AM</b></li><li>► Meow Wolf Monday Funday <b>3 - 8 PM</b></li></ul>	<ul style="list-style-type: none"><li>► Music and Movement in Los Alamos <b>9:30 - 10 AM</b></li><li>► Chit-Chat Playtime <b>9:30 - 10:30 AM</b></li><li>► Babytime in Los Alamos <b>10:15 - 11 AM</b></li><li>► Storytime and Craft at Southside Library <b>10:30 - 11:30 AM</b></li><li>► Grab-N-Go Crafts <b>1:30 - 3:30 PM</b></li><li>► After School Art at Main Library <b>3:30 - 4:30 PM</b></li></ul>	<ul style="list-style-type: none"><li>► Music and Movement in Los Alamos <b>9:30 - 10 AM</b></li><li>► Bilingual Books and Babies at Main Library <b>10:30 - 11:30 AM</b></li><li>► Queen Bee's Kids Sing-Along <b>10:30 - 11:15 AM</b></li><li>► Storytime and Craft at La Farge Library <b>10:30 - 11:30 AM</b></li><li>► Wee Wednesdays <b>1:30 - 3 PM</b></li><li>► What's Up Wednesdays <b>1:30 - 3 PM</b></li><li>► Teen Lounge at La Farge Library <b>1:30 - 3:30 PM</b></li><li>► Kids Sing-Along at Southside Library <b>3:15 - 4 PM</b></li><li>► Youth Chess at Main Library <b>5:45 - 7:45 PM</b></li></ul>

### LEGEND

► RECURRING EVENT



CELEBRATION & HOLIDAY

SUPPORT & COMMUNITY

SPORTS & ACTIVITY

VISUAL ARTS



PERFORMING ARTS

EDUCATION/ENRICHMENT

NATURE

ENTERTAINMENT





Thursday	Friday	Saturday
<div>1</div> <div><div>► Music and Movement in Los Alamos 9:30 - 10 AM</div><div>► Storytime at Mesa Public Library 10:30 - 11 AM</div><div>► Seeds and Sprouts 10:30 - 11:30 AM</div><div>► Storytime and Craft at Main Library 10:30 - 11:30 AM</div><div>► Yoga and Movement for Kids 10:30 - 11:30</div><div>► Fun with Firefighters 1 - 2 PM</div><div>► Thursdays are Yours 4 - 7 PM</div><div>► Pajama Storytime at Southside Library 6:30 - 7:30 AM</div></div>	<div>2</div> <div><div>► Bilingual Books and Babies at La Farge Library 10 - 10:30 AM</div><div>► Tour Make Santa Fe 6 - 7:30 PM</div><div>► First Friday Fractals 8 &amp; 9 PM</div></div>	<div>3</div> <div><div>► Music and Movement in Los Alamos 9:30 - 10 AM</div><div>► Bilingual Books and Babies at Southside Library 10 - 10:30 AM</div><div>► Parent and Tot Creative Movement at Main Library 10 - 10:30 AM</div><div>► Storytime at Mesa Public Library 10 - 10:30 AM</div><div>► Baby and Toddler Play Hour at Main Library 10 - 10:30 AM</div><div>► Read to a Pup Southside Library 11:30 - 12:30 AM</div><div>► Meet Cornelius the Snake 1 - 2 PM</div><div>Santa Fe Opera Young Voices Concert 1- 2 PM</div><div>► Science Saturdays 2 - 4 PM</div></div>
<div>8</div> <div><div>► Music and Movement in Los Alamos 9:30 - 10 AM</div><div>► Seeds and Sprouts 10:30 - 11:30 AM</div><div>► Storytime and Craft at Main Library 10:30 - 11:30 AM</div><div>► Yoga and Movement for Kids 10:30 - 11:30</div><div>► Thursdays are Yours 4 - 7 PM</div><div>► Pajama Storytime at Southside Library 6:30 - 7:30 AM</div><div>► Anime Club 5:30 - 7:30 PM</div></div>	<div>9</div> <div><div>► Bilingual Books and Babies at La Farge Library 10 - 10:30 AM</div><div>► Tour Make Santa Fe 6 - 7:30 PM</div><div>Fine Art Friday with Alas De Agua 2 - 4 PM</div></div>	<div>10</div> <div><div>► Music and Movement in Los Alamos 9:30 - 10 AM</div><div>► Bilingual Books and Babies at Southside Library 10 - 10:30 AM</div><div>► Parent and Tot Creative Movement at Main Library 10 - 10:30 AM</div><div>► Storytime at Mesa Public Library 10 - 10:30 AM</div><div>► Baby and Toddler Play Hour at Main Library 10:30 - 11:30 AM</div><div>► Read to a Pup Southside Library 11:30 - 12:30 AM</div><div>► Meet Cornelius the Snake 1 - 2 PM</div><div>► Science Saturdays 2 - 4 PM</div></div>
<div>15</div> <div><div>► Music and Movement in Los Alamos 9:30 - 10 AM</div><div>► Storytime at Mesa Public Library 10:30 - 11 AM</div><div>► Seeds and Sprouts 10:30 - 11:30 AM</div><div>► Storytime and Craft at Main Library 10:30 - 11:30 AM</div><div>► Yoga and Movement for Kids 10:30 - 11:30</div><div>► Thursdays are Yours 4 - 7 PM</div><div>► Pajama Storytime at Southside Library 6:30 - 7:30 AM</div></div>	<div>16</div> <div><div>► Bilingual Books and Babies at La Farge Library 10 - 10:30 AM</div><div>► Tour Make Santa Fe 6 - 7:30 PM</div></div>	<div>17</div> <div><div>► Music and Movement in Los Alamos 9:30 - 10 AM</div><div>► Parent and Tot Creative Movement at Main Library 10 - 10:30 AM</div><div>► Bilingual Books and Babies at Southside Library 10 - 10:30 AM</div><div>► Storytime at Mesa Public Library 10:30 - 11 AM</div><div>► Baby and Toddler Play Hour at Main Library 10:30 - 11:30 AM</div><div>► Read to a Pup Southside Library 11:30 - 12:30 AM</div><div>► Meet Cornelius the Snake 1 - 2 PM</div><div>► Science Saturdays 2 - 4 PM</div></div>
<div>22</div> <div><div>► Music and Movement in Los Alamos 9:30 - 10 AM</div><div>► Autism Support Group 10 - 11 AM</div><div>► Storytime at Mesa Public Library 10:30 - 11 AM</div><div>► Seeds and Sprouts 10:30 - 11:30 AM</div><div>► Storytime and Craft at Main Library 10:30 - 11:30 AM</div><div>► Yoga and Movement for Kids 10:30 - 11:30</div><div>► Thursdays are Yours 4 - 7 PM</div><div>► Pajama Storytime at Southside Library 6:30 - 7:30 AM</div><div>► Random Fandom 6 - 7:30 PM</div></div>	<div>23</div> <div><div>► Bilingual Books and Babies at La Farge Library 10 - 10:30 AM</div><div>► Tour Make Santa Fe 6 - 7:30 PM</div></div>	<div>24</div> <div><div>► Music and Movement in Los Alamos 9:30 - 10 AM</div><div>► Bilingual Books and Babies at Southside Library 10 - 10:30 AM</div><div>► Parent and Tot Creative Movement at Main Library 10 - 10:30 AM</div><div>► Storytime at Mesa Public Library 10 - 10:30 AM</div><div>► Baby and Toddler Play Hour at Main Library 10:30 - 11:30 AM</div><div>► Read to a Pup Southside Library 11:30 - 12:30 AM</div><div>► Meet Cornelius the Snake 1 - 2 PM</div><div>► Science Saturdays 2 - 4 PM</div></div>
<div>29</div> <div><div>► Music and Movement in Los Alamos 9:30 - 10 AM</div><div>► Storytime at Mesa Public Library 10:30 - 11 AM</div><div>► Seeds and Sprouts 10:30 - 11:30 AM</div><div>► Storytime and Craft at Main Library 10:30 - 11:30 AM</div><div>► Yoga and Movement for Kids 10:30 - 11:30</div><div>► Thursdays are Yours 4 - 7 PM</div><div>► Pajama Storytime at Southside Library 6:30 - 7:30 AM</div></div>		



# Winter Calendar

## LEGEND



**CELEBRATION & HOLIDAY**

**SUPPORT & COMMUNITY**

**SPORTS & ACTIVITY**

**VISUAL ARTS**



**PERFORMING ARTS**

**EDUCATION/ENRICHMENT**

**NATURE**

**ENTERTAINMENT**

## SPECIAL EVENTS

### THE NUTCRACKER AT POPEJOY

**DECEMBER 1 | 2 - 4 PM**

See the brave Nutcracker save Clara as they battle the Rat King and all the joy and wonder that follows! This heartwarming performance features selections from the beloved ballet layered with live commentary. A perfect introduction to classical music and the art of ballet, this show is a highlight of the holiday season.

### LOS ALAMOS WINTERFEST DECEMBER 1 | 9 AM - 8 PM

Los Alamos WinterFest Weekend is a family-oriented holiday event that celebrates winter in Los Alamos. A number of businesses and organizations host events including the North Pole Workshop and Breakfast with Santa.

### TWINKLE LIGHT PARADE DECEMBER 2 | 5 - 6 PM

A free, family-friendly holiday event that illuminates a mile-long stretch on Route 66 in Nob Hill in Albuquerque. Local businesses, communities, school groups, and a variety of Albuquerque organizations come together to present an exciting event that brings a sparkle to all. The Twinkle Light Parade will roll west on Central Avenue through Nob Hill from Washington Street to Girard Boulevard.

### LOS ALAMOS HOLIDAY LIGHTS PARADE DECEMBER 2 | 6 - 7 PM

The Holiday Lights Parade is the highlight of WinterFest Weekend in Los Alamos. This free, family-friendly event follows a route on Central Avenue. This year's theme is Winter Around the World.

### FREE NIGHT FOR FOSTER AND ADOPTIVE FAMILIES AT EXPLORA DECEMBER 2 | 6 - 8 PM

Foster, adoptive, bio, guardian, kin, and forever families are invited to join the New Mexico Child First Network at Explora. This is a no-cost event full of fun activities, community resources, free pizza, hot cocoa, pictures with Santa, and more. Free for all attendees. RSVP to [maralyn@nmchildfirst.org](mailto:maralyn@nmchildfirst.org) with family name and number of attendees.

### SANTA FE YOUTH SYMPHONY'S WINTER CONCERT SERIES

**DECEMBER 2 & 3 | 6 - 7 PM**

The Santa Fe Youth Symphony presents its winter concert series, An Arctic Odyssey, from Dec. 2–3 at Christ Church Santa Fe.



JF Mazur Studio courtesy photo.

### GRAB-N-GO CRAFTS DECEMBER 5, 12, & 19 | 1:30 - 3:30 PM

The Española Public Library offers Grab-N-Go craft kits for youth to take home and make. The number of kits is limited, so patrons are asked to call at the beginning of the week to reserve their kit. Pick-ups are on Tuesdays. Dec. 5: Cotton Ball Yeti, Popsicle Stick Tree Ornaments. Dec. 12: December Chain-link Wall Decorations, Candy Cane Ornament. Dec. 19: Handprint Christmas Wreath, Paper Strip Angel Ornaments.

### INTRO TO BLOCK PRINTING AND HOLIDAY CARDS

**DECEMBER 7 | 4:30 - 7:30 PM**

Block Printing Workshop with Artist Erin Haldane. This workshop, for teens and adults, will go over the basic principles and tools needed for anyone to begin their journey with block

printing. Through the lens of creating some holiday cheer, we'll be covering basic design considerations, techniques to create your own patterns and images, and some tips and tricks for the carving process.

### FINE ART FRIDAY WITH ALAS DE AGUA DECEMBER 8 | 2 - 4 PM

This collaboration between Santa Fe Children's Museum and Alas de Agua gives kids a chance to explore a wide range of media including collage, painting, drawing, and sculpture as they learn about Santa Fe's magnificent culture and imagery. This activity cultivates critical thinking skills, hand-eye coordination, builds self-confidence, and ultimately the child will create masterpieces.



# Winter Calendar

## COFFEE TALK AND CLOTHING SWAP

**DECEMBER 9 | 11 AM - 1 PM**

Come sip, chat, and share in a safe and welcoming space. Enjoy a cozy coffee talk where we discuss issues, share stories, and connect within the LGBTQ+ community. Bring your gently used, fabulous clothing items for our Queer Clothing Swap. Give your wardrobe a fresh, inclusive makeover and embrace the chance to help others do the same. This event is FREE, but space is limited. Make sure to register at [bit.ly/46Xl6oz](https://bit.ly/46Xl6oz) to secure your spot.

## "MY FAVORITE BOOK" COMMUNITY BOOK SWAP

**DECEMBER 9 | 1 - 3 PM**

Bring in a new or used copy of your favorite book (or books) and take one of someone else's. Write on a post-it note why you love that particular book and spread the joy of reading. Refreshments will be served.

## BLIPPI: THE WONDERFUL WORLD TOUR

**DECEMBER 10 | 4 - 5 PM**  
Dance, sing, and learn with Blippi and special guest Meekah as they discover what makes different cities unique and special. There will be monster trucks, excavators, and garbage trucks galore.

Get ready to shake those wiggles out and OJ Twist your way through this brand-new musical party.

## SOUNDS OF THE SEASON

**DECEMBER 10 | 4 - 5 PM**  
Annual holiday pops concert and winter favorites—Santa Fe tradition—featuring a side-by-side collaborative performance with the Santa Fe Youth Symphony Association.

## HOME PAGES: CHAPTER BOOK

**DECEMBER 11 | 1:30 - 2:30 PM**  
Detailed book discussions and learning about the authors of award-winning chapter books geared toward homeschoolers ages 8 to 11. Meets at Mesa Public Library in Los Alamos.

## FAMILY READ-IN PARTY

**DECEMBER 12 | 5 - 7 PM**

This is a drop-in family event at La Farge Library. Families are encouraged to come in and choose books from the nomination carts, read aloud together, and cast their votes.

## NEW MEXICO DESERT CHORALE POP-UP CAROLS

**DECEMBER 13 | 5:30 - 6 PM**  
The Santa Fe Desert Chorale Pop-Up Carols series of performances visits Southside Library. Enjoy beautiful voices and get into the holiday spirit.

## Let their imagination soar to new heights!

Open a savings account that is designed for all stages of childhood with DNCU's Baxter the Bear!

Del Norte Credit Union's youth accounts help little ones learn fun ways to save money! What are you waiting for?

Kids earn more at DNCU\*!

Sign up today!

**Ndel**  
**Norte**  
CREDIT UNION

**dncu.com**  
Improving Lives!

\*.25% Annual Percentage Yield increase on Share Savings or special youth Share Certificate accounts. Minimum Balance To Open of \$5.00, must be under 18 to open a youth account.



Federally Insured by  
**NCUA**





Zara and Sophia, Age 9, happily showing their knitted hats they just created.  
Photo courtesy of Dragonfly Art Studio.

### KID NATURE PARTY: KRAMPUS MASKS

**DECEMBER 15 | 3:30 - 5 PM**  
Explore children's folk traditions about Krampus and make your own nature-inspired Krampus mask at La Farge Library. Hot cocoa, treats, and all craft supplies will be provided.

**SANTA FE  
PUBLIC SCHOOLS CLOSED**  
**DECEMBER 19 - JANUARY 3**  
Santa Fe Public Schools are closed in observance of winter break.

### FAMILY GINGERBREAD HOUSE MAKING

**DECEMBER 19 & 22**  
**19<sup>TH</sup>: 3:30 - 4:30 PM**  
**22<sup>ND</sup>: 3:30 - 5 PM**

Families with children may build their own "gingerbread" house at the Main Library, while supplies last. All supplies will be provided.

### SKATE WITH SANTA

**DECEMBER 23 | 3:30 - 5 PM**

Santa always takes time during his busy holiday schedule to visit the Los Alamos County Ice Rink. He is bringing his elves to greet boys and girls and hand out

candy canes! Santa and his elves will pose for pictures on and off the ice, which are a pleasure for grown-ups and kids alike.

### LUMINARIA SKATE

**DECEMBER 24 | 5 - 7 PM**

Start a holiday tradition with family and friends by spending Christmas Eve at the Los Alamos County Ice Rink. Quiet holiday music, luminarias, and holiday lights will transform the rink. Admission includes coffee and cocoa.

### CHRISTMAS EVE FAROLITO WALK

**DECEMBER 24 | 10 - 11 AM**

One of Santa Fe's most beloved holiday traditions, the Canyon Road Farolito Walk lights up the hearts and souls of thousands who stroll the iconic road on Christmas Eve. Known for world-class galleries, Canyon Road transforms itself into a work of art during this annual celebration unique to Santa Fe. Thousands of farolitos cast a glow on the gardens, courtyards, and adobe walls

of the century-old buildings lining the road. Please confirm the event status by emailing [canyonroadmerchants01@gmail.com](mailto:canyonroadmerchants01@gmail.com).

### ESPAÑOLA AND LOS ALAMOS SCHOOLS CLOSED

**DECEMBER 26 - JANUARY 9**

Española and Los Alamos Schools are closed in observance of the winter break.

### BACH AND BEYOND FOR FAMILIES

**DECEMBER 27 | 10 - 11 AM**

A free, fun, and festive one-hour concert exploring Bach and his influence on generations of composers, with Colin Jacobsen and the Pro Musica Bach Ensemble. [sfpromusica.org](http://sfpromusica.org)

### NEW YEAR'S EVE ON THE SANTA FE PLAZA

**DECEMBER 31 | 10 PM - 12 AM**

Ring in the New Year together in the City Different! Round up your family, friends, and visitors to welcome the New Year to Santa Fe. Be part of the fun as the City Different says adios to 2023 at the annual free New Year's Eve celebration on the Santa Fe Plaza.

### TOUGHEST MONSTER TRUCK TOUR

**JANUARY 12 & 13 | 7:30 PM - 9 PM**

The Toughest Monster Truck Tour will return to Rio Rancho Events Center on January 12-13. This year's event includes the return of Dirt Crew and the Reigning Monster Truck Champion Tailgator, plus several others, including at least one

never seen before in New Mexico. The premier monster truck event in Albuquerque with lots of big dirt jumps, old-school crush cars, and racing that involves lots of turns.

### NEW MEXICO BRICK CONVENTION LEGO FAN EXPO

**JANUARY 20 | 8 AM - 3 PM**

The New Mexico Brick Convention is the ultimate event for Lego lovers of all ages. The numerous play areas treat fans of all ages to a day of hands-on fun, games, and life-size Lego models. Attractions include lots of amazing Lego creations to gawk at, meet-and-greets with professional Lego artists, and vendors selling the latest Lego accessories, sets, mini-figures, and even retired and hard-to-find Lego items. [brickconvention.com/newmexico](http://brickconvention.com/newmexico)

### SANTA FE OPERA YOUNG VOICES CONCERT

**FEBRUARY 3 | 1 - 2 PM**

The Santa Fe Opera presents singers from their Young Voices high school program. Learn a little about opera and enjoy the wonderful performances.



Photo courtesy of JF Mazur Studio.



## ► RECURRING ACTIVITIES



### CELEBRATION & HOLIDAY

#### NM BIOPARK'S RIVER OF LIGHTS 5 - 10 PM

Get into the holiday spirit at River of Lights, New Mexico's original and largest walk-through holiday attraction! Enjoy a stroll through our 1.5-mile path of over 800 one-of-a-kind hand-welded light displays, animated and 3-D sculptures, and millions of twinkling lights on a suggested one-way path. Free admission for children under 2. Runs until December 30, closed on Christmas.

**DATES:** 12/1 - 12/30



### SUPPORT & COMMUNITY

#### AUTISM SUPPORT GROUP 10 - 11 AM

Meets on the third Thursday of the month via Zoom. All parents and caregivers raising children with an Autism diagnosis are welcome! Contact facilitator with questions or to sign up: [abbie.nelson@lccs-nm.org](mailto:abbie.nelson@lccs-nm.org).

**DATES:** 12/21, 1/18, 2/15.

#### BABY AND TODDLER PLAY HOUR AT MAIN LIBRARY 10:30 - 11:30 AM

Free, unstructured play where children can explore and interact with other children and new educational toys. Learn and make social connections together with your toddler.

**DATES:** 12/2, 12/9, 12/23, 1/6, 1/13, 1/20, 1/27, 2/3, 2/10, 2/17, 2/24.

#### BABYTIME IN LOS ALAMOS 10:15 - 11 AM

Babytime is best for ages 0 to 2 and their caregivers at Mesa Public Library. Library staff shares songs, bounces, and rhymes to help babies develop early literacy skills. The program might include scarves, bells, or rattles. It includes focused play and free play. Free admission.

**DATES:** 12/5, 12/12, 12/19, 1/9, 1/16, 1/23, 1/30, 2/6, 2/13, 2/20, 2/27.

#### BIRTH TALK LOS ALAMOS 6:30 - 8:30 PM

A free community talk circle for pregnant women and mothers. Birth Talk Los Alamos is a safe place to learn about options

in pregnancy and childbirth. Hosted virtually on the first Monday of the month.

**DATES:** 12/4, 1/4, 2/5.

#### CHIT-CHAT PLAYTIME 9:30 - 10:30 AM

A casual meet-up for kiddos and caregivers at Family Strength Network in Los Alamos. Adults can chat and relax as kids play with all of Family Strength Network's toys and the occasional play experiences.

**DATES:** 12/5, 12/12, 12/19, 1/16, 1/23, 1/30, 2/6, 2/13, 2/20, 2/27.

#### DAWN 'TIL DUSK DAY 10 - 11 AM

Los Luceros Historic Site will extend its hours from sunrise to sunset on the first Sunday of each month. During this time, entrance into Los Luceros will be free for New Mexico residents and includes access to the site's visitor center, historic buildings, trails, and picnic areas.

**DATES:** 12/1, 1/7, 2/2

#### GRANDPARENTS RAISING GRANDCHILDREN 6 - 7 PM

This kinship care group meets via zoom on the second Monday of each month to discuss the many challenges associated with kinship. Connect with others who are navigating the challenges of raising a grandchild and learn about resources that can help. Although this group is geared to grandparents, any family that finds themselves in the world of kinship care is welcome. Registration required. [lafsn.org](http://lafsn.org)

**DATES:** 12/11, 1/8, 2/12.

#### THURSDAYS ARE YOURS 4 - 7 PM

Extended hours and free admission for children under the age of 17 at the Santa Fe Children's Museum.

**DATES:** 12/7, 12/14, 12/21, 12/28, 1/4, 1/11, 1/18, 1/25, 2/1, 2/8, 2/15, 2/22, 2/29.

#### TRANS + NONBINARY FAMILY SUPPORT GROUP 6:25 - 7:30 PM

A space to connect with others who are parents, caregivers or family members of someone who is trans/genderqueer/gender nonconforming. Meets on the second Monday of the month at the Unitarian Church of Los Alamos.

**DATES:** 12/11, 1/8, 2/12.

## WE'VE GOT FAITH IN KIDS!

Join our children's and youth programs!



At United, we . . .

- Seek to "love God, Neighbor, and Creation!"
- Believe that every person is a child of God.
- Want to walk in Jesus' ways of love and justice.
- Are called to care for the wider community.
- Welcome families of all sizes & shapes and people of all ages, orientations, and backgrounds.
- Know that faith is a journey we take together.

## WE INVITE YOU TO CHECK US OUT!

**SUNDAY MORNINGS AT 10:00**  
**MONTHLY FAMILY SUPPER BAGS**  
**AND AT-HOME PROJECTS!**

The United Church of Santa Fe  
1804 Arroyo Chamiso (at St. Michael's Dr., near the hospital)  
505-988-3295 [www.UnitedChurchofSantaFe.org](http://www.UnitedChurchofSantaFe.org)  
Rev. Talitha Arnold, Pastor; Kate Murphy, Youth Minister



### SPORTS & ACTIVITY

#### PARENT AND TOT CREATIVE MOVEMENT AT MAIN LIBRARY 10 - 11 AM

Using fun music and stories, early preschool-age children can exercise their young bodies and minds in a relaxed and joyful environment with their special adult.

**DATES:** 12/2, 12/9, 12/23, 1/6, 1/13, 1/20, 1/27, 2/3, 2/17, 2/24.

#### YOGA AND MOVEMENT FOR KIDS 10:30 - 11:30 AM

A yoga class designed specifically with young children in mind. Joyful movement and kinesthetic creativity are explored. Yoga mats are provided if needed. All children must be accompanied by an adult. Recommended for preschool and early school-age children. Held every Thursday at La Farge Library.

**DATES:** 12/7, 12/14, 12/21, 1/4, 1/11, 1/18, 1/25, 2/1, 2/8, 2/15, 2/22, 2/29.



### VISUAL ARTS

#### AFTER-SCHOOL ART AT MAIN LIBRARY 3:30 - 4:30 PM

Practice your creative skills at the library with themed art sessions. Art is beneficial for building creative problem-solving, out-of-the-box thinking, expressiveness, and a rich imagination.

**DATES:** 12/5, 12/12, 12/19, 1/2, 1/9, 1/16, 1/23, 1/30, 2/6, 2/13, 2/20, 2/27.

#### ELEMENTS OF ART: STORYTIME 10 - 11 AM

Children ages 3 to 5, are invited to the New Mexico Museum of Art Library to learn about a basic element of art through story, song, and craft. This free program introduces children to concepts such as color, line, and form.

**DATES:** 12/4, 12/18, 1/15, 1/29, 2/12, 2/26.



## FIRST FRIDAY FRACTALS 8 & 9 PM

A spectacular, award-winning full-dome planetarium show that takes viewers on a tour of the fractals in nature and zooms through infinitely complex mathematical fractals. Featuring original music, the show is both educational and highly entertaining, and suitable for audiences 3 and up. Shows are at 8 and 9 PM on the first Friday of each month.

**DATES:** 12/1, 1/5, 2/2.

## FREE FIRST SUNDAYS ALL DAY

Admission is free on the first Sunday of every month to New Mexico residents with ID to the Museum of Indian Arts and Culture, the Museum of International Folk Art, the New Mexico History Museum, and the New Mexico Museum of Art.

**DATES:** 12/1, 1/7, 2/2

## MEOW WOLF MONDAY FUNDAY 3 - 8 PM

Every Monday, tickets from 3 to 8 PM are half price with promo code MONDAYFUNDAY for New Mexico residents.

**DATES:** 12/4, 12/11, 12/18, 1/8, 1/15, 1/22, 1/29, 2/5, 2/12, 2/19, 2/26.

## TODDLER CRAFT TIME 10 - 11 AM

Family Strength Network holds a monthly toddler crafts workshop. It includes hands-on activities which are a pleasure for grown-ups and kids alike.

**DATES:** 12/20, 1/17, 2/21.



Mav, Age 10, showing her amazing abstract weaving. Photo courtesy of Dragonfly Art Studio.



Artwork by Emily Minan. Photo courtesy of Art School Santa Fe.

## PERFORMING ARTS

### KIDS SING-ALONG AT SOUTHSIDE LIBRARY

**3:15 - 4 PM**

Early childhood literacy skills are explored through fun songs and play along with Queen Bee Music Association. Children actively participate in every session. Held every Wednesday for preschool-age children.

**DATES:** 12/6, 12/13, 12/20, 1/10, 1/17, 1/24, 1/31, 2/7, 2/14, 2/21, 2/28

### MUSIC AND MOVEMENT IN LOS ALAMOS 9:30 - 10 AM

Musical fun for children ages 0 to 6 and their caregivers! Music and Movement (M&M) is great for brain and body development. M&M uses songs, scarves, bells, rhythm sticks, and more to count, clap, sing, jump, and wiggle together. Los Alamos Library system offers M&M four times a week: Tuesdays, Thursdays, and Saturdays at Mesa Public Library, and Wednesdays at White Rock Library.

**DATES:** 12/2, 12/4, 12/6, 12/7, 12/9, 12/12, 12/13, 12/14, 12/19, 12/20, 12/21, 12/23, 1/10, 1/11, 1/13, 1/17, 1/18, 1/20, 1/24, 1/25, 1/27, 1/30, 1/31, 2/1, 2/3, 2/6, 2/8, 2/10, 2/13, 2/14, 2/15, 2/17, 2/20, 2/22, 2/24, 2/27, 2/28, 2/29

### QUEEN BEE'S KIDS SING-ALONG 10:30 - 11:15 AM

Get those kids singing, moving, and shaking! Teacher Sarah-Jane leads classes through a

variety of engaging music games and sing-alongs.

**DATES:** 12/6, 12/13, 12/20, 12/27, 1/3, 1/10, 1/17, 1/24, 1/31, 2/7, 2/14, 2/21, 2/28

### TODDLER TUNES 10:30 - 11 AM

Children and parents sing and dance together while Lauren Marcus shares simple ways to engage children in music and movement at Family Strength Network in Los Alamos.

**DATES:** 12/6, 1/3, 2/7.

## EDUCATION & ENRICHMENT

### ADVENTURES IN STEM 1:30 - 2:30 PM

Kid friendly STEM (science, technology, engineering, and math) activities hosted by STEAM Lab at the Family Strengths Network in Los Alamos. All ages welcome.

**DATES:** 12/13, 1/10, 2/14.

### BABY AND TODDLER PLAY HOUR AT SOUTHSIDE LIBRARY 10:30 - 10:30 AM

Free, unstructured play where children can explore and interact with other children and new educational toys. Learn and make social connections together with your toddler.

**DATES:** 12/2, 12/9, 12/23, 1/6, 1/13, 1/20, 1/27, 2/3, 2/10, 2/17, 2/24.

### BILINGUAL BOOKS AND BABIES AT LA FARGE LIBRARY 10 - 10:30 AM

The power of music and song are used as an introduction to

language in this program for babies and toddlers. Exposure to new and different language sounds in early childhood can help children with language acquisition skills as they grow. This program is for babies and toddlers.

**DATES:** 12/1, 12/8, 12/15, 12/22, 1/5, 1/12, 1/19, 1/26, 2/2, 2/9, 2/16, 2/23.

### BILINGUAL BOOKS AND BABIES AT MAIN LIBRARY 10 - 11 AM

The power of music and song is used as an introduction to language in this program for babies and toddlers. Exposure to new and different language sounds in early childhood can help children with language acquisition skills as they grow. This program is held every Wednesday.

**DATES:** 12/6, 12/13, 12/20, 1/3, 1/10, 1/17, 1/24, 1/31, 2/7, 2/14, 2/21, 2/28.

### BILINGUAL BOOKS AND BABIES AT SOUTHSIDE LIBRARY 10 - 10:30 AM

The power of music and song are used as an introduction to language in this program for babies and toddlers. Exposure to new and different language sounds in early childhood can help children with language acquisition skills as they grow. This program is for babies and toddlers.

**DATES:** 12/2, 12/9, 12/16, 12/23, 1/6, 1/13, 1/20, 1/27, 2/3, 2/10, 2/17, 2/24.

### FUN WITH FIREFIGHTERS 1 - 2 PM

Join the Santa Fe Fire Department for story time at the Santa Fe Children's Museum and then go outside to visit their fire truck. Free with admission to the museum.

**DATES:** 12/7, 1/4, 2/1.

### PAJAMA STORYTIME AT SOUTHSIDE LIBRARY 6:30 - 7:30 PM

A social storytime where parents can receive parenting information and chat with other parents. This program is for preschool-age children and their adults. Held every Thursday; a meal is provided on the first Thursday of the month.



**READ TO A PUP AT  
SOUTHSIDE LIBRARY**

**11:30 AM - 12:30 PM**

Children practice their reading skills by sharing a story with a furry friend. A local therapy dog will be here at the library eagerly waiting! This program is for early school-age children.

**DATES:** 12/2, 12/9, 12/23, 1/6, 1/13, 1/20, 1/27, 2/3, 2/10, 2/17, 2/24.

**SCIENCE SATURDAYS  
2 - 4 PM**

Scientists and STEM instructors visit the Santa Fe Children's Museum to conduct experiments, explorations, and demonstrations. Free with admission.

**DATES:** 12/2, 12/9, 12/16, 12/23, 12/30, 1/6, 1/13, 1/20, 1/27, 2/3, 2/10, 2/17, 2/24.

**STORYTIME AND CRAFT AT  
LA FARGE LIBRARY**

**10:30 - 11:30 AM**

Created with early childhood teaching techniques, this story hour and craft provide social, physical, and cognitive skill practice for kindergarten readiness. This program is held

every Wednesday and is for preschool-age children.

**DATES:** 12/6, 12/13, 12/20, 12/27, 1/3, 1/10, 1/17, 1/24, 1/31, 2/7, 2/14, 2/21, 2/28.

**STORYTIME AND CRAFT  
AT MAIN LIBRARY**

**10:30 - 11:30 AM**

Created with early childhood teaching techniques, this story hour and craft provide social, physical, and cognitive skill practice for kindergarten readiness. This program is for preschool-age children and held every Thursday.

**DATES:** 12/7, 12/14, 12/21, 12/28, 1/4, 1/11, 1/18, 1/25, 2/1, 2/8, 2/15, 2/22, 2/29.

**STORYTIME AT  
MESA PUBLIC LIBRARY**

**10 - 10:30 AM**

Children ages 3 to 5 years old are invited each Saturday to attend story time in the lower rotunda of the Mesa Public Library in Los Alamos. Storytime is meant to teach and affirm early literacy concepts, songs, and fun with kids who can listen to a few books and are starting to put the world together in story form. Babies and older siblings are



**Santa Fe Family Health Center**

**4730 Beckner Rd.  
Santa Fe, NM, 87507  
505.989.4500**

**NOW OPEN & APPOINTMENTS AVAILABLE**

Expanded primary care services,  
behavioral health for all ages,  
and comprehensive dental care  
all under one roof!

**Scan to Schedule!**



**Pediatric  
care is  
Now  
available in  
Santa Fe!**



**DISCOVER  
LOS ALAMOS  
THIS WINTER**

Winterfest December 1-3  
Skiing at Pajarito Mountain  
Ice Skating at the County Ice Rink  
Bradbury Science Museum  
Los Alamos Nature Center  
and great places to find comfort food

VALLES CALDERA NATIONAL PRESERVE

**LOS ALAMOS**  
where discoveries are made

Learn more at [VisitLosAlamos.org](http://VisitLosAlamos.org)





Margaux, Age 6, with the fantastic flower crown she created. Photo courtesy of JF Mazur Studio.

welcome, but caregivers should be aware of the program's focus.  
**DATES:** 12/2, 12/7, 12/9, 12/14, 12/21, 12/23, 1/11, 1/13, 1/18, 1/20, 1/25, 1/27, 2/1, 2/3, 2/10, 2/15, 2/17, 2/22, 2/24, 2/29.

### STORYTIME AND CRAFT AT SOUTHSIDE LIBRARY

**10:30 - 11:30 AM**  
Created with early childhood teaching techniques, this story hour and craft provide social, physical, and cognitive skill practice for kindergarten readiness. This program is for preschool-age children.  
**DATES:** 12/5, 12/12, 12/19, 12/26, 1/2, 1/9, 1/16, 1/23, 1/30, 2/6, 2/13, 2/20, 2/27.

### STORYTIME AT WHITE ROCK BRANCH LIBRARY

**10:15 - 10:45 AM**  
Children ages 3 to 5 years old are invited each Wednesday to attend storytime at White Rock Branch Library. Storytime is meant to teach and affirm early literacy concepts through songs and fun with kids who can listen to a few books and are starting to put the world together in story form. Babies and older

siblings are welcome, but caregivers should be aware of the program's focus.  
**DATES:** 12/6, 12/13, 12/20, 1/10, 1/17, 1/24, 1/31, 2/7, 2/14, 2/21, 2/28.

### TOUR MAKE SANTA FE

**6 - 7:30 PM**  
MAKE Santa Fe is offering tours of its space and will answer any questions you have about the space, tools, membership, costs, etc.  
**DATES:** 12/1, 12/8, 12/15, 12/22, 12/29.

### YOUTH CHESS AT MAIN LIBRARY

**5:45 - 7:45 PM**  
Youth Chess is a weekly chance for school-age youth to continue to improve their critical thinking skills through the game of chess. While playing the game with other youth, new techniques, strategies, and tricks are introduced. This program is for youth of all ages who know the basic elements of chess and can play without aid. Held every Wednesday.  
**DATES:** 12/6, 12/13, 12/20, 12/27, 1/3, 1/10, 1/17, 1/24, 1/31, 2/7, 2/14, 2/21, 2/28

## NATURE

### MEET CORNELIUS THE SNAKE

**1 - 2 PM**  
Say hello to beloved corn snake Cornelius and watch him eat his weekly dinner at the Santa Fe Children's Museum. Please be aware that Cornelius will not be able to come out when he is shedding or not feeling well.  
**DATES:** 12/2, 12/9, 12/23, 12/30 1/6, 1/13, 1/20, 1/27, 2/3, 2/10, 2/17, 2/24.

### NATURE PLAYTIME

**10 - 11 AM**  
Start the week off by playing outside at the Pajarito Environmental Education Center. An opportunity for toddlers, preschoolers, and their caregivers to explore the nature center and explore the natural world. Each playtime features outdoor play, sensory exploration, and activities focused on a theme in nature. Dress for the weather—this is hosted outside year-round. Admission is free.  
**DATES:** 12/4, 12/11, 12/18, 1/8, 1/15, 1/22, 1/29, 2/5, 2/12, 2/19, 2/26.

### SEEDS AND SPROUTS

**10:30 - 11:30 AM**  
Hands-on gardening and nature-themed craft projects at the Santa Fe Children's Museum every Thursday.  
**DATES:** 12/7, 12/14, 12/21, 12/28, 1/4, 1/11, 1/18, 1/25, 2/1, 2/8, 2/15, 2/22, 2/29.

## ENTERTAINMENT

### ANIME CLUB

**5:30 - 7:30 PM**  
Anime Club is for anyone in grades 7 to 12. This chill program provides snacks and a comfortable place with friendly people to watch 2 hours of anime every second Thursday at the Zone at the Mesa Public Library in Los Alamos. Anime may be rated TV-14/PG-13. Art and freebies.  
**DATES:** 12/14, 1/11, 2/8.

### PLAY PICHENOTTE

**3:15 - 4 PM**  
Join Dave Victor Lagasse for a historical board game that is guaranteed to put a smile on your child's face. Pichenotte is a fun disk-flicking game that entertains children of all ages and helps with developing kids' motor skills. Every first Wednesday of the month. Free with admission to the Santa Fe Children's Museum.  
**DATES:** 12/6, 1/3, 2/7.

### RANDOM FANDOM

**6 - 7:30 PM**  
Hang out time for 7th-12th graders to make stuff, play games, eat, and talk on the fourth Thursdays of the month, except November and December. Held at the Mesa Public Library in Los Alamos.  
**DATES:** 1/25, 2/22.



Photo courtesy of JF Mazur Studio.





# WINTER PROGRAMS FOR YOU & YOUR FAMILY!

December

13

## Visit with Mr. & Mrs. Claus

10:30 am – 1 pm

Enjoy a special Wee Wednesday read-aloud and sing-a-long with Mr. & Mrs. Claus, (10:30 am – 11:15 am).  
Photos with the dynamic duo to follow (11:30 am – 1 pm).

December

31

## Noon Year's Eve

11 am – 1 pm

Celebrate New Year's Eve before bedtime with music, special guests, fun activities, and a balloon drop at noon!

LEARN ABOUT OUR OTHER EVENTS  
& THEMED WEEKLY PROGRAMS:

[santafechildrensmuseum.org](http://santafechildrensmuseum.org)



1050 Old Pecos Trail



Santa Fe, NM 87501



(505) 989-8359





# Keeping You Healthy

At CHRISTUS St. Vincent, we are always committed to providing the best and safest health care to you and your family. From routine check-ups or vaccinations to acute illnesses – we are always ready to care for you and your loved ones. Visit us in one of our five conveniently located Primary Care locations.

## **Adult & Family Care**

Offering Family Medicine for  
newborns, children, adults and seniors  
465 St. Michael's Dr. Suite 230  
Santa Fe, NM 87505

## **Arroyo Chamiso Pediatrics**

Offering Pediatric Care for  
newborns through 18 years of age  
465 St. Michael's Dr., Suite 200  
Santa Fe, NM 87505

## **Entrada Contenta Health Center**

Offering Pediatrics, Family Medicine, and Urgent Care  
5501 Herrera Dr.  
Santa Fe, NM 87507

## **Family Medicine Center**

Offering Family Medicine for  
newborns, children, adults and seniors  
2025 Galisteo St.  
Santa Fe, NM 87505

## **Pojoaque Primary Care**

Offering Family Medicine for  
newborns, children, adults and seniors  
5 Petroglyph Circle, Suite A  
Pojoaque, NM 87506

**Call (505) 913-DOCS (3627) to schedule your primary care appointment today.**

We accept most major insurance plans, including Blue Cross Blue Shield, Presbyterian Health Plan, Aetna, Cigna, CHRISTUS Health Plan, Humana, TRICARE and United Healthcare. Please consult with your health plan.